



# Maori



SHELF  
SUPPORTS





# SYMBOLS AND FINISHES LEGEND

## SYMBOLS



= SHELF SAFELY LOCKED DURING TRANSPORTATION AND AT HOME.



= ANTI-TURNOVER LOCKING SYSTEM



= NORMS / PATENTS



= PHILLIPS / POZIDRIV



= WITH BUFFER



= PART NO.



= BLADE SLOT



= WITH MAGNET



= PCS. PER PACKAGE



= COMBI SLOT



= HEXAGONAL SOCKET



= NEWTON



= CAPACITY LOADING



= HEXALOBULAR SOCKET



= FRICTION



= WOOD / GLASS THICKNESS



= COUNTERSUNK HEAD



= AUTOMATIC



= HOLE DIAMETER



= PAN HEAD



= DROP DOWN



= DIAMETER



= FLANGE HEAD



= LENGTH



= FLAT HEAD



= STANDARD HINGE



= HEIGHT



= TRILOBULAR SCREW



= KIMANA HINGE



= RIGHT VERSION



= SELF-TAPPING SCREW



= FLAP HINGE



= LEFT VERSION



= EURO THREAD



= WITH SPRING



= SETTING CODE



= METRIC THREAD



= WITHOUT SPRING



= PCS. PER PAD



= PRE-INSERTED SCREW



= REVERSED SPRING



= CUT ON REQUEST



= PRE-INSERTED SCREW AND SPREADING BUSH



= SELF ADHESIVE



= WITH FLANGE

NOTE: Printing errors and omissions may exist despite our best efforts to ensure accuracy. We reserve the right to alter specifications without notice.

## MATERIALS

**ZA** = Zinc Alloy

**ST** = Steel

**HSS** = High Speed Steel

**BR** = Brass

**ABS** = Acrylonitrile Butadiene Styrene

**ZAnk** = Nickel-plated Zinc Alloy

**STzk** = Zinc-plated Steel

**AL** = Aluminium

**WD** = Wood

**EVA** = Ethylene Vinyl Acetate

**EP** = **ENGINEERING PLASTIC**

+ **EP** = other engineering plastic available on request

**SR** = **SOFT RUBBER**

+ **SR** = other soft rubber available on request

**EPn** = Natural Engineering Plastic

**EPc** = Clear Engineering Plastic

**SRn** = Natural Soft Rubber

**EPw** = White Engineering Plastic

**EPg** = Grey Engineering Plastic

**SRw** = White Soft Rubber

**EPwg** = Water Green Engineering Plastic

**EPa** = Anthracite Engineering Plastic

**SRb** = Black Soft Rubber



## FINISHES



+ **OTHER FINISHES AVAILABLE ON REQUEST**

PART NO.	FINISHES	PART NO.	FINISHES	PART NO.	FINISHES
00	Insignificant finish	IF	Middle Grey	RO	Red
AA	Natural	IJ	Light Grey	UT	T-Met 9007
AB	White	IL	Grey 20	UZ	T-Met
AE	White 9010	IN	Grey met. 26	WA	Bronzed
EA	Black	JB	Bright Aluminium	WI	Burnished
EC	Matt Black	JC	Aluminium - Chrome	XD	Satin-finished Steel
EE	Anthracite	JD	Matt Aluminium	YA	Nickel-plated
EW	Grey 9007	JE	Satin-finished Aluminium	YB	Bright Nickel-plated
FU	Gunmetal	JF	Aluminium - Brass	YC	Matt Nickel-plated
FV	Gunmetal V52	JG	Aluminium 5	YD	Satin-finished Nickel-plated
GR	Raw	JL	Aluminium PE 11	YQ	Black Nickel
HA	Brass-Plated	JM	Aluminium RAL 9006	Z9	Black Zinc
HH	Tropicalized	KA	Chrome	ZA	Zinc alloy
HL	Raw Brass	KB	Bright Chrome	ZN	Zinc-plated
HX	Graphite	KC	Matt Chrome	ZQ	Bright Gold
IA	Grey	LD	Brown 8019	ZY	Titanium
IB	Metallic Grey	NN	Metallic Beige	ZZ	Clear



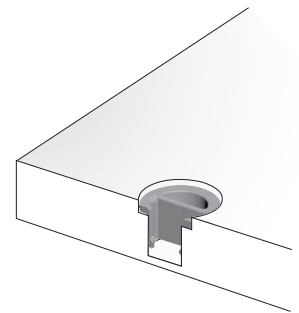
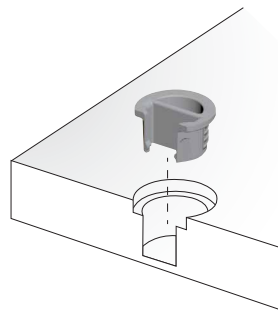
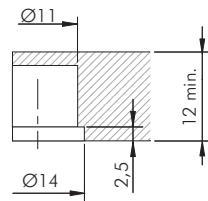
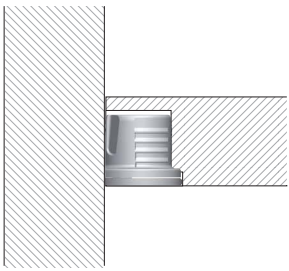
## MAORI - Flush installation



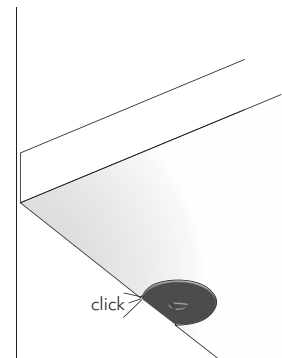
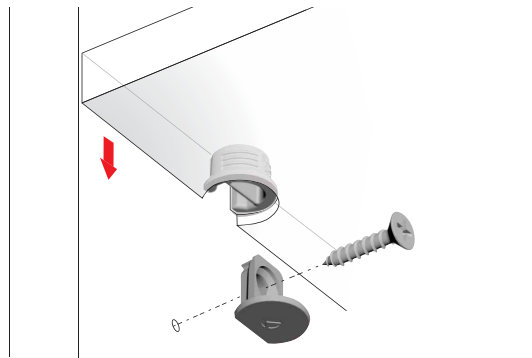
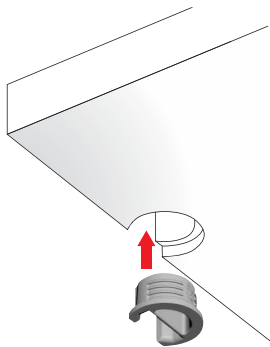
12 mm min.

Certificates available on request.

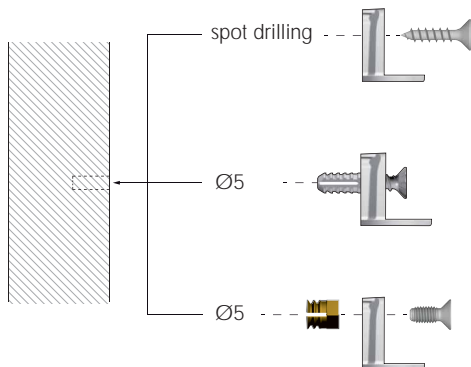
### SPECIFICATIONS



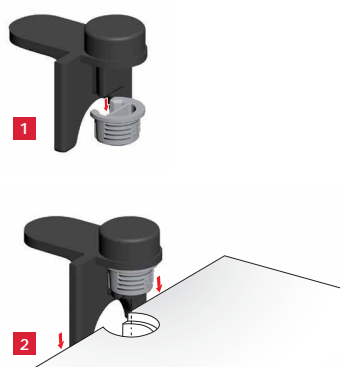
### INSTALLATION AND ASSEMBLING



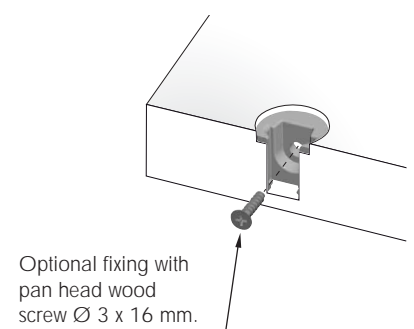
### FIXING OPTIONS FOR SIDE PANEL BRACKET



### TEMPLATE (for assembling see the related section)



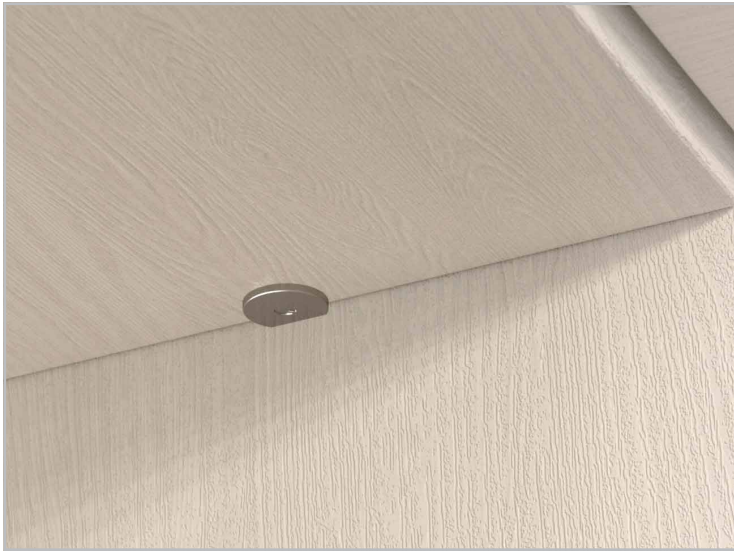
### OPTIONAL FIXING (12mm thick version excluded): To achieve much more horizontal connection.



Optional fixing with  
pan head wood  
screw Ø 3 x 16 mm.



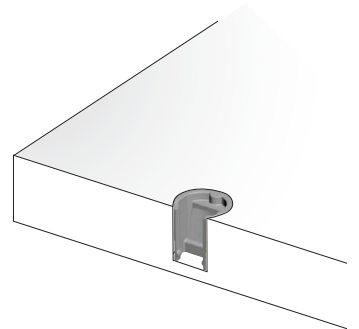
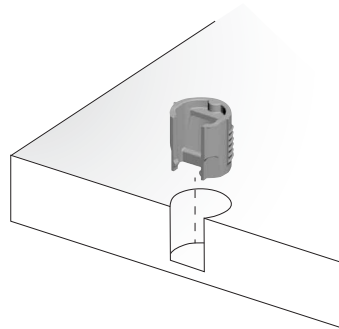
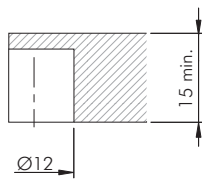
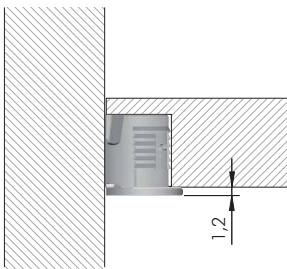
## MAORI - Step installation



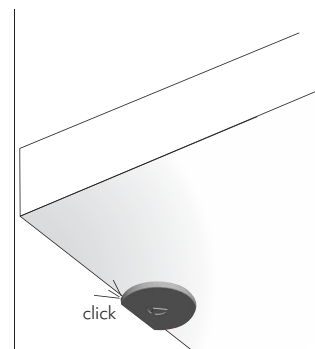
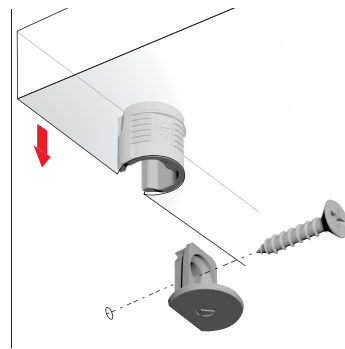
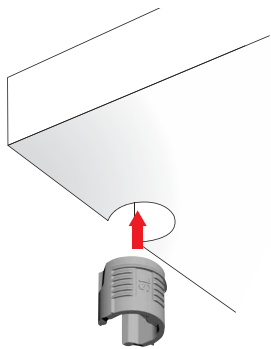
15 mm min.

Certificates available on request.

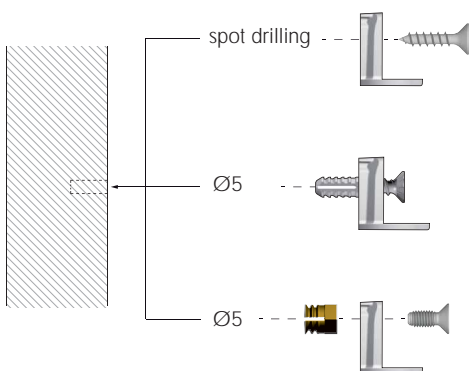
### SPECIFICATIONS



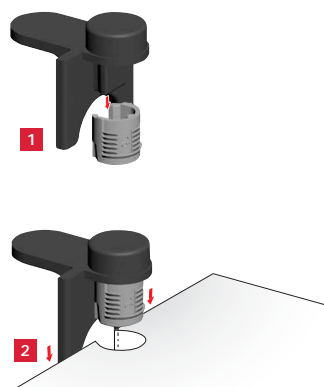
### INSTALLATION AND ASSEMBLING



### FIXING OPTIONS FOR SIDE PANEL BRACKET

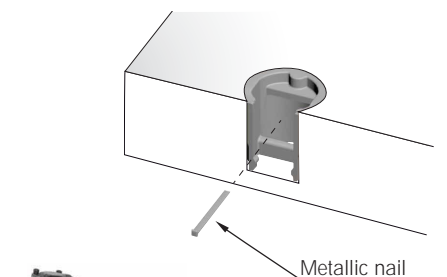


### TEMPLATE (for assembling see the related section)



### OPTIONAL FIXING WITH NAILER:

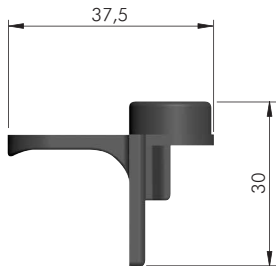
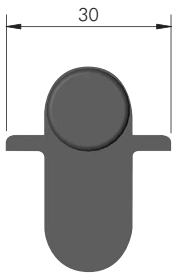
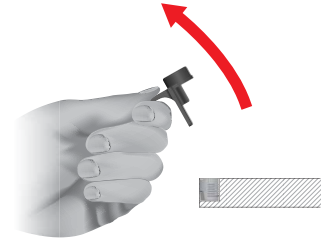
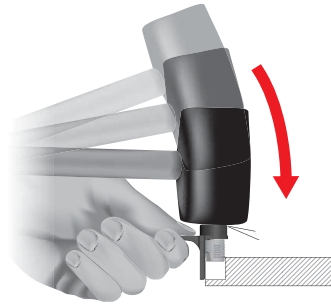
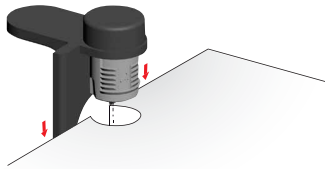
To achieve much more horizontal connection.



We recommend to use an electric or pneumatic nailer.

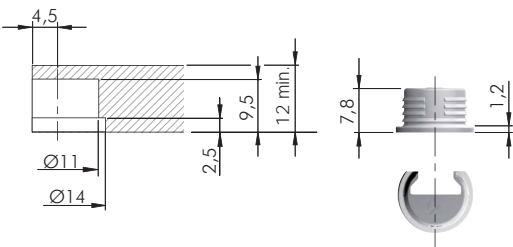


## MAORI TEMPLATE

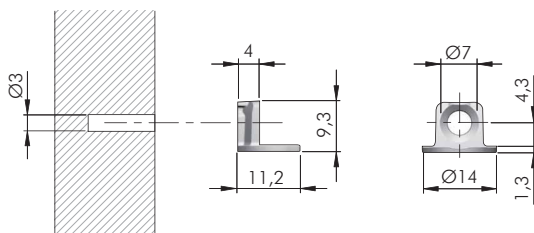


EPb	= on request
123	
1175209000	

## MAORI 12 mm

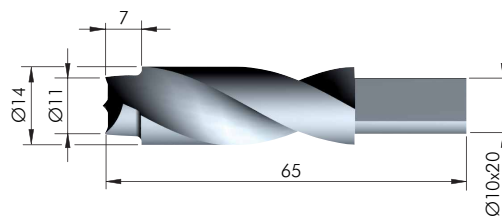
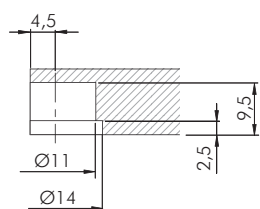


EP	= 30.000 pcs.
123	
11701010IL	



= Ø 3 mm	
ZA	= 5000 pcs.
123	
11702010YA	

## DRILL BIT FOR MAORI 12 mm

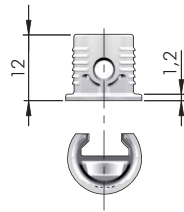
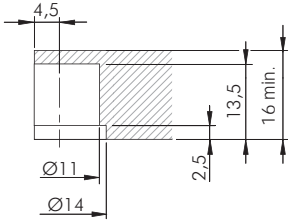


HSS	= on request
123	
1175201000	
1175205000	



**MAORI**  15-16 mm

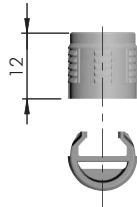
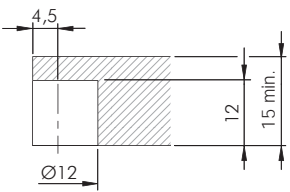
**FLUSH INSTALLATION**



EP  = 20.000 pcs.

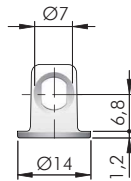
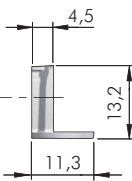
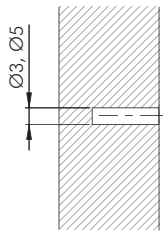
  **11701040IL**



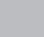
**STEP INSTALLATION**






EP  = 20.000 pcs.

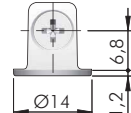
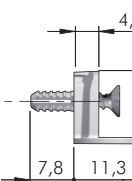
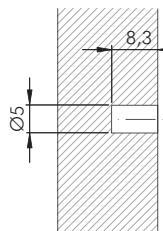
  **11701140IL**



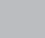




 = Ø 3, Ø 5 mm  + 


ZA  = 5000 pcs.



  **11704010YA**



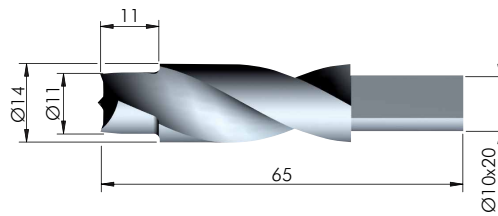
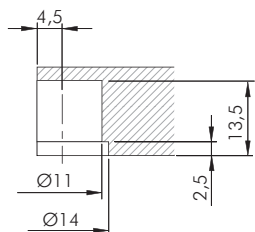
 = Ø 5 mm  + 


  = PZ2




ZA ST EP  = 2500 pcs.


  **11704030YA**

**DRILL BIT FOR MAORI**  16 mm - Flush installation



HSS  = on request

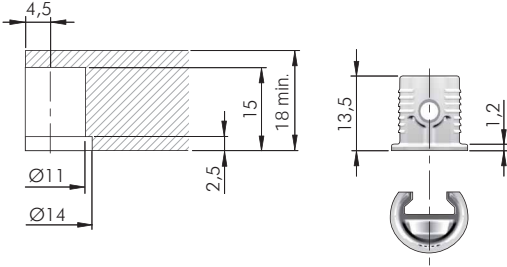
  **1175202000** 


**1175206000** 



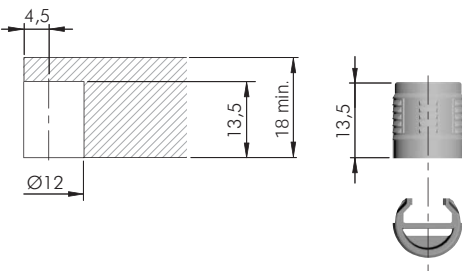
## MAORI 18 - 19 mm




### FLUSH INSTALLATION

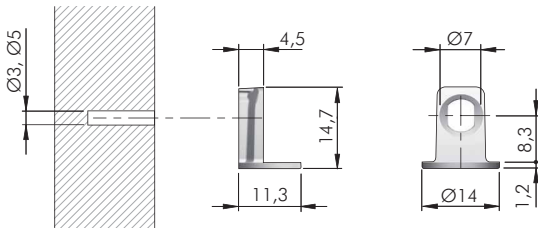








EP	 = 15.000 pcs.
 123 	
<b>11701070IL</b>	

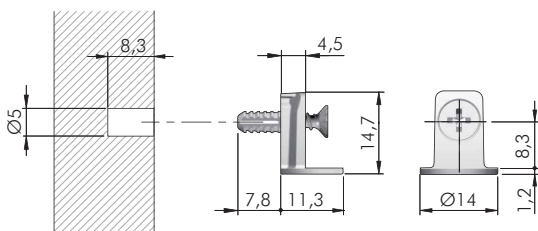
### STEP INSTALLATION











EP	 = 15.000 pcs.
 123 	
<b>11701160IL</b>	

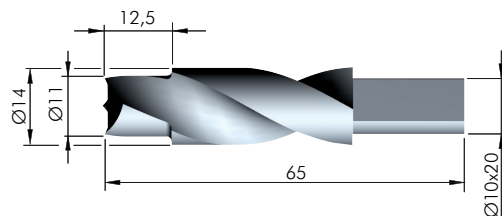
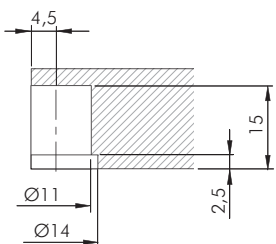







 = Ø 3, Ø 5 mm	 + 
ZA	 = 5000 pcs.
 123 	
<b>11710010YA</b>	



 = Ø 5 mm	 + 
  = PZ2	
ZA ST EP	 = 2500 pcs.
 123 	
<b>11710030YA</b>	

## DRILL BIT FOR MAORI 18 - 19 mm - Flush installation



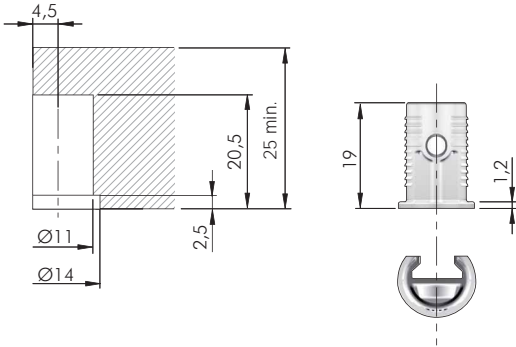
HSS	 = on request
 123 	
<b>1175203000</b>	
<b>1175207000</b>	








**MAORI**  25 / 29 mm

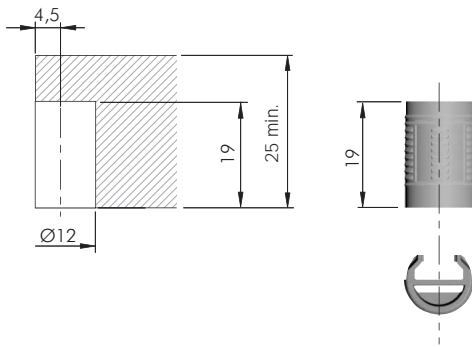
FLUSH INSTALLATION






EP  = 10.000 pcs.


  **11701100IL**

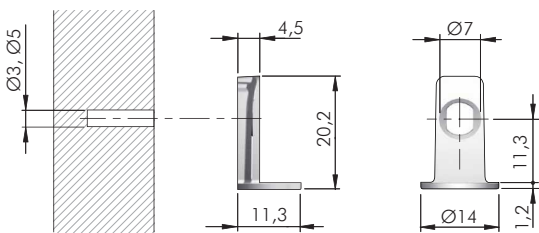
STEP INSTALLATION







EP  = 10.000 pcs.



  **11701180IL**

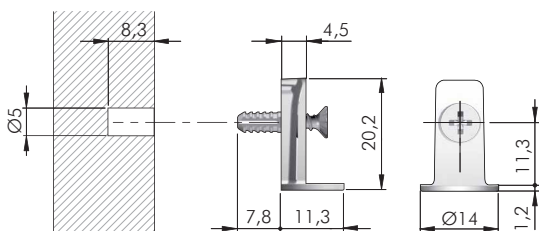
**MAORI side brackets for**  25 mm








 = Ø 3, Ø 5 mm  + 


ZA  = 2500 pcs.



  **11716010YA**



 = Ø 5 mm  + 

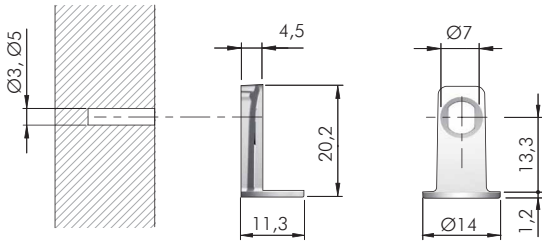
  = PZ2






ZA ST EP  = 2500 pcs.

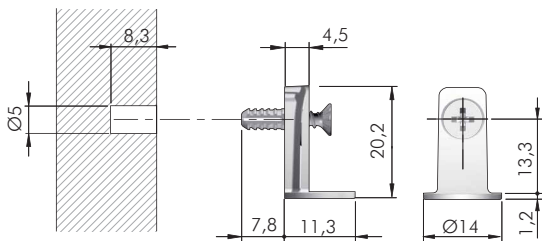
  **11716030YA**










## MAORI side brackets for 29 mm

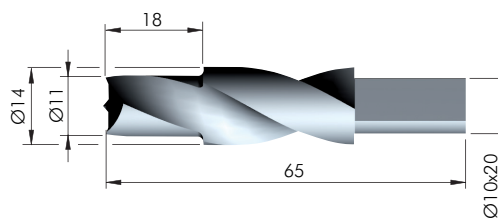
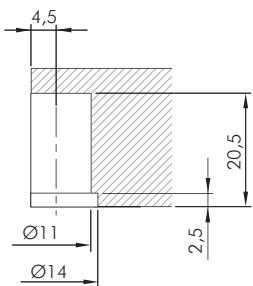







 = Ø 3, Ø 5 mm	
ZA	 = 5000 pcs.
 123	
<b>11722010YA</b>	



 = Ø 5 mm	
  = PZ2	
ZA ST EP	 = 2000 pcs.
 123	
<b>11722030YA</b>	

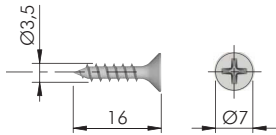
## DRILL BIT FOR MAORI 25, 29 mm - Flush installation



HSS	 = on request
 123	
<b>1175204000</b>	
<b>1175208000</b>	



**MAORI FIXING ACCESSORIES**

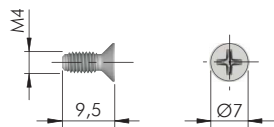


= Ø 3 mm
 +

= PZ2

ST  = 10.000 pcs.

**60101390Z**

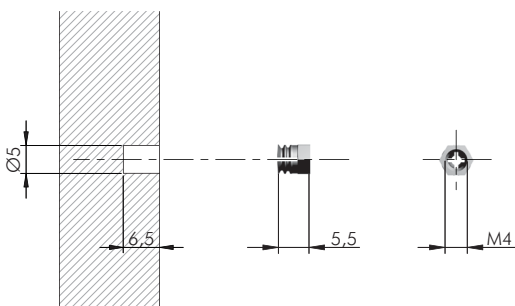


= PZ2
 +

= M4

ST  = 10.000 pcs.

**11750010Z**

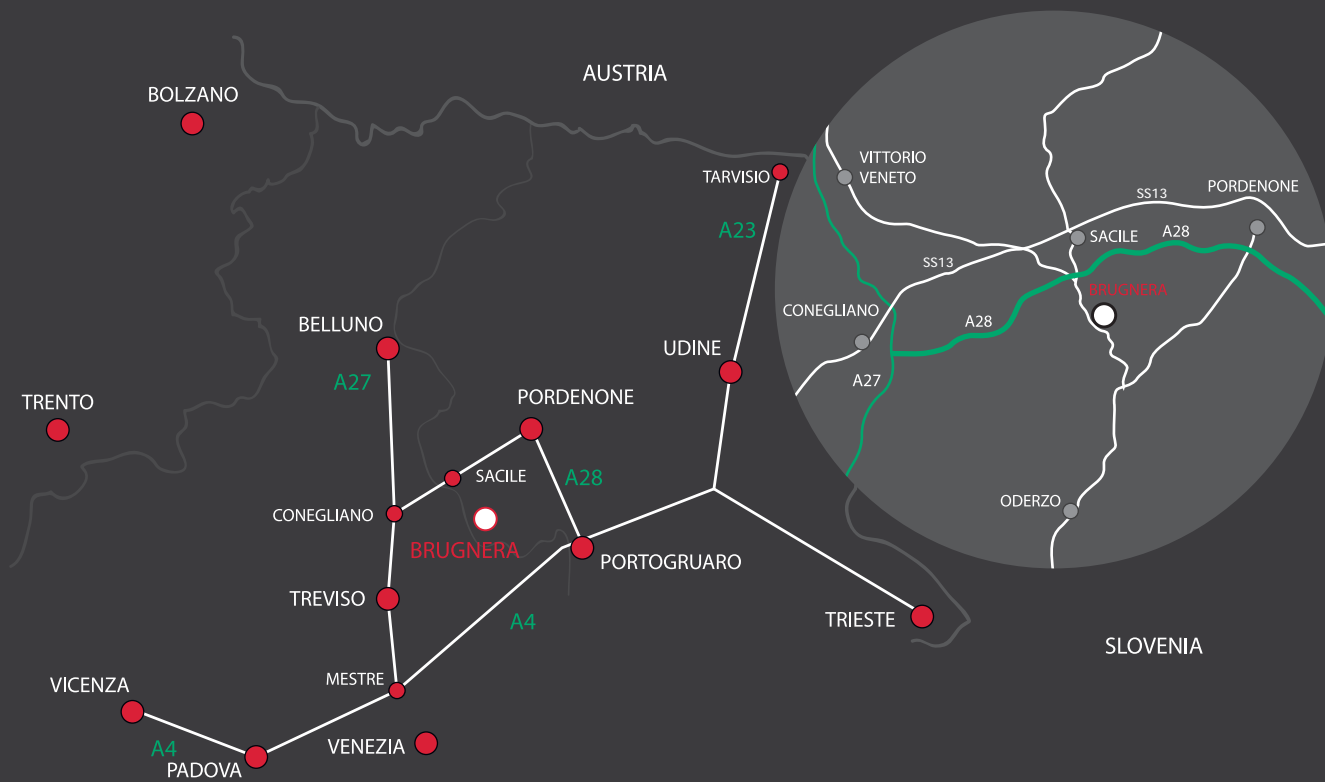


= Ø 5 mm

= M4

BR  = 5000 pcs.

**20502000HL**



[www.italianaferramenta.it](http://www.italianaferramenta.it)