

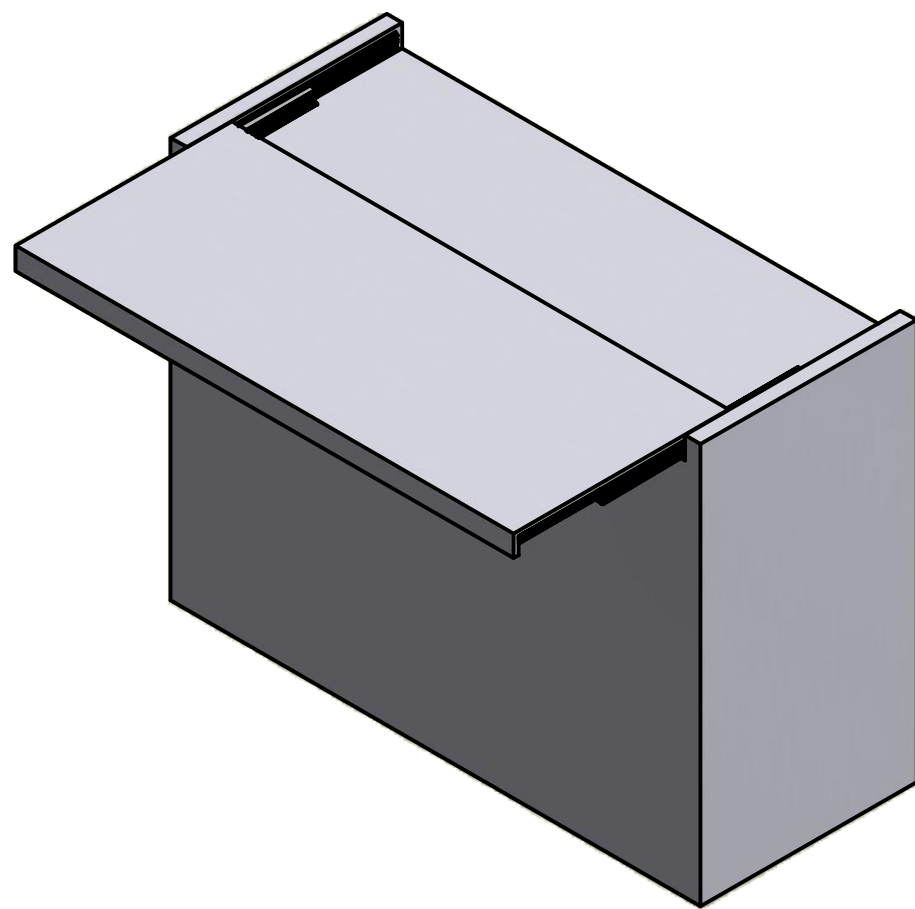
SNACK

ISTRUZIONI DI MONTAGGIO ASSEMBLY INSTRUCTIONS

MODELLI
MODELS:

411/78.1281.22 Snack 2600 mm

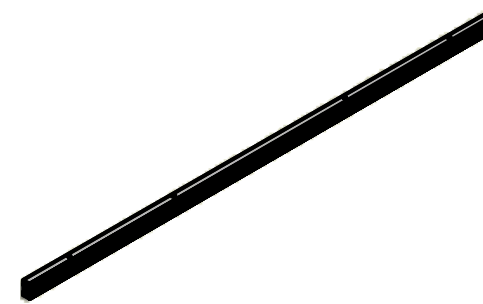
411/78.1282.22 Snack 2000 mm



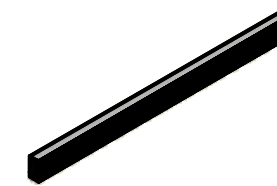
CONTENUTO DELLA CONFEZIONE INCLUDED IN THE PACKAGING



GUIDE
SLIDES




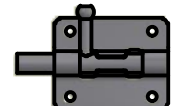


TRAVERSO (X2)
CONNECTION BAR

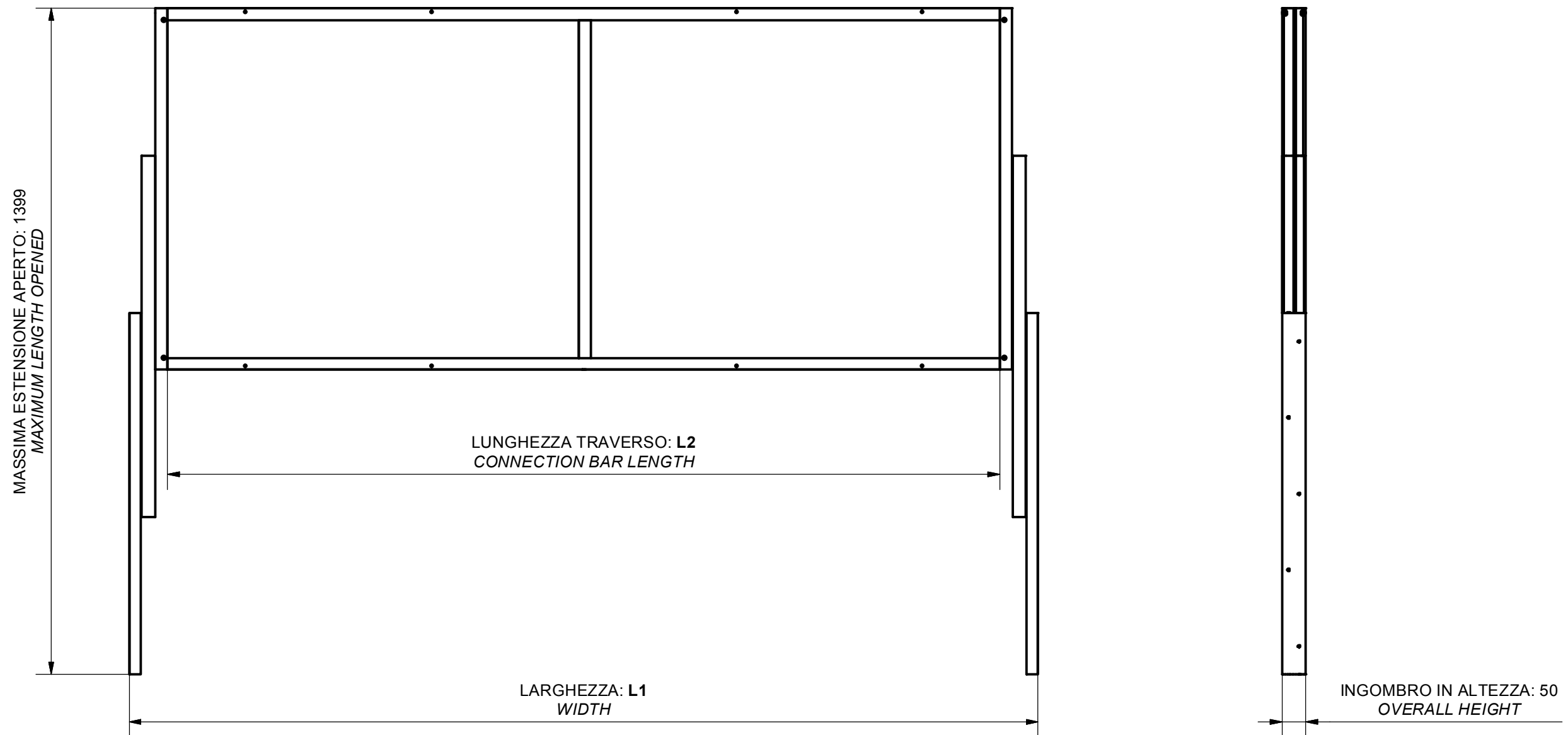


TRAVERSO
CONNECTION BAR

SACCHETTO ACCESSORI - ACCESSORIES

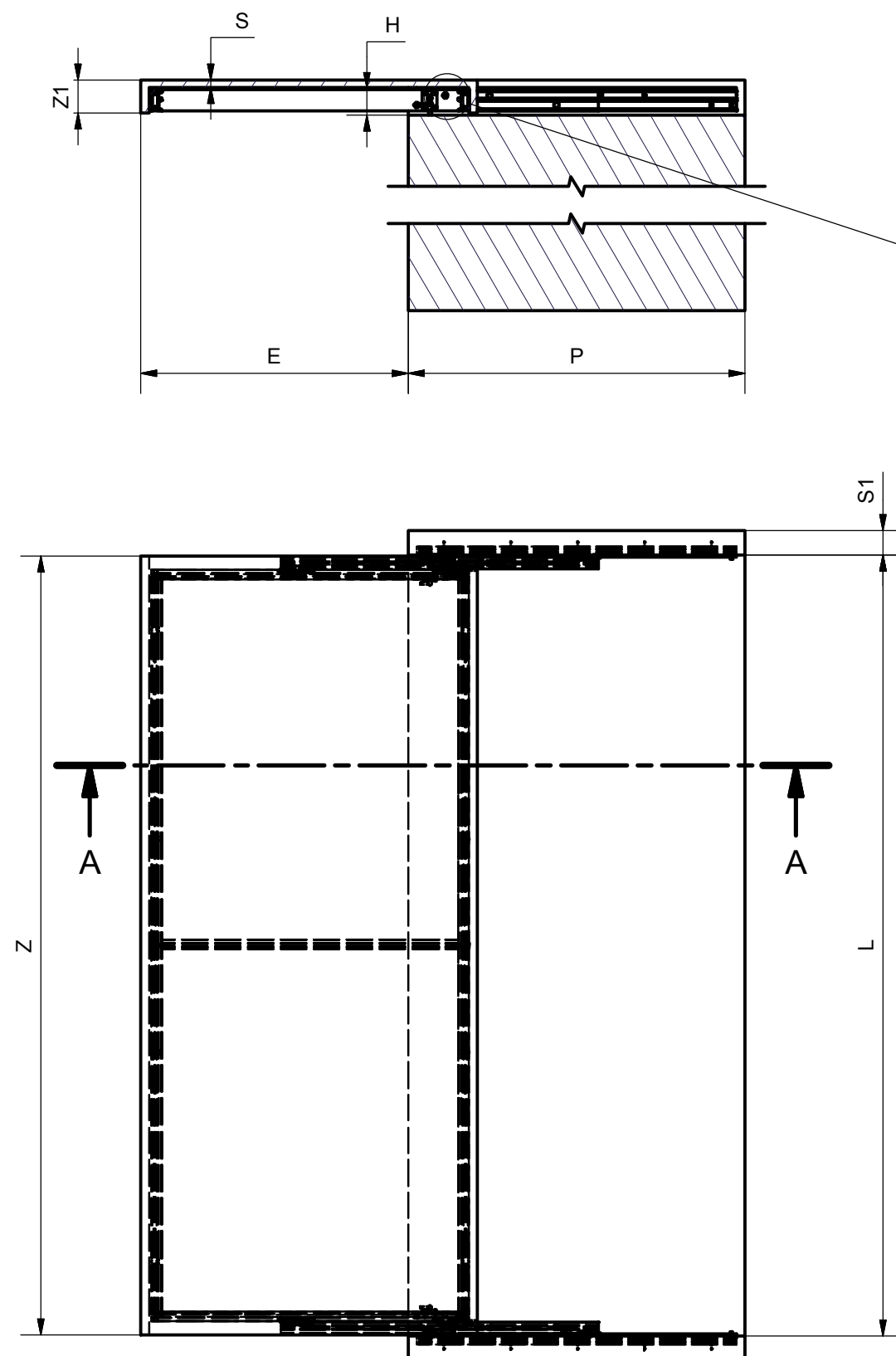
-  A. Vite autofilettante TC 3.5x9.5 - 3.5x9.5 Tapping screw TC (x 8)
-  B. Vite truciolare 3.5x16 - 3.5x16 chipboard screw (x 10)
-  C. Vite TPS M6x40 trilobata - Screw M6x40 TPS (x 12)
-  D. Blocco - Block (x 2)

DIMENSIONI DI MASSIMA GENERAL DIMENSIONS

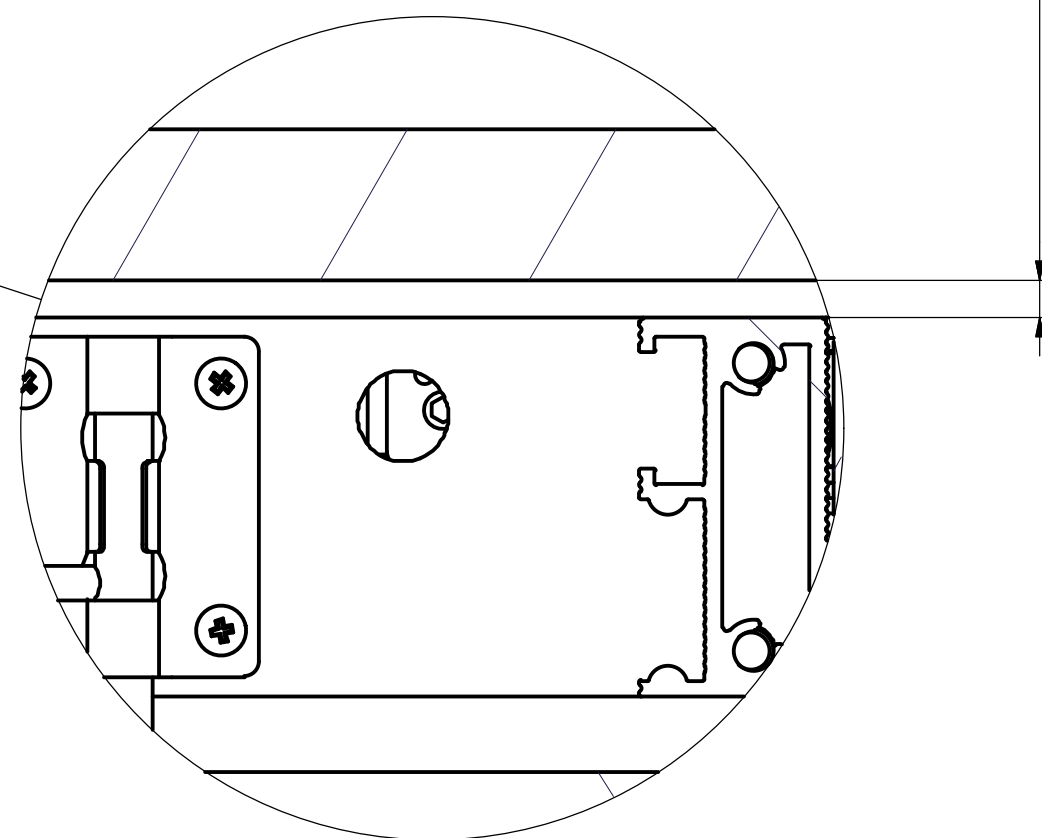


MODELLO - MODEL	MODULO - MODULE	L1 (mm)	L2 (mm) = L1-160
411/78.1281.22	2600	2508	2348
411/78.1281.22	2000	1908	1748

DIMENSIONI GENERALI MOBILE GENERAL CABINET DIMENSIONS

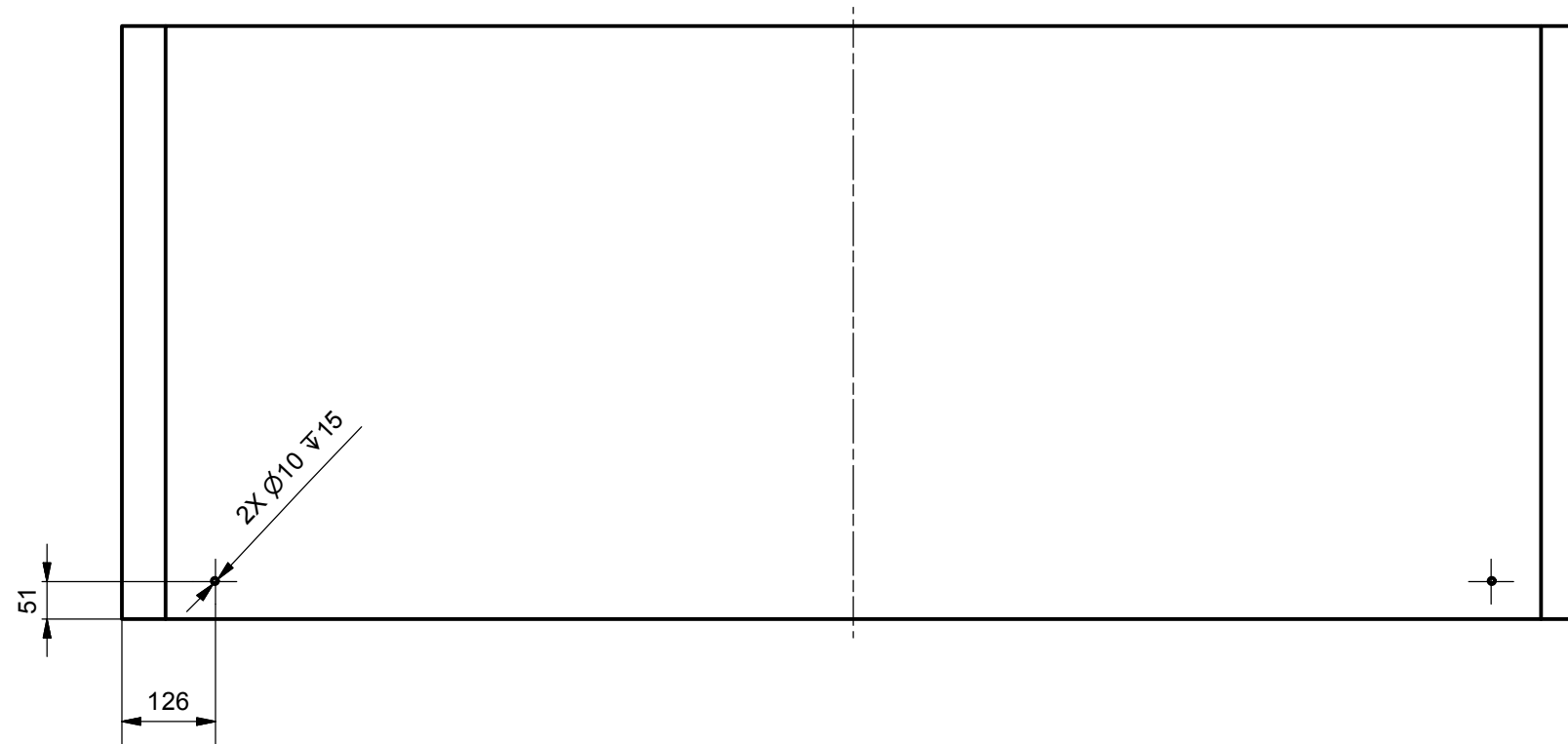
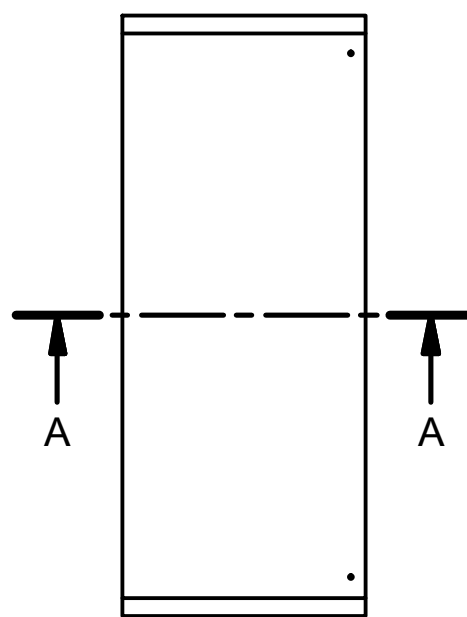
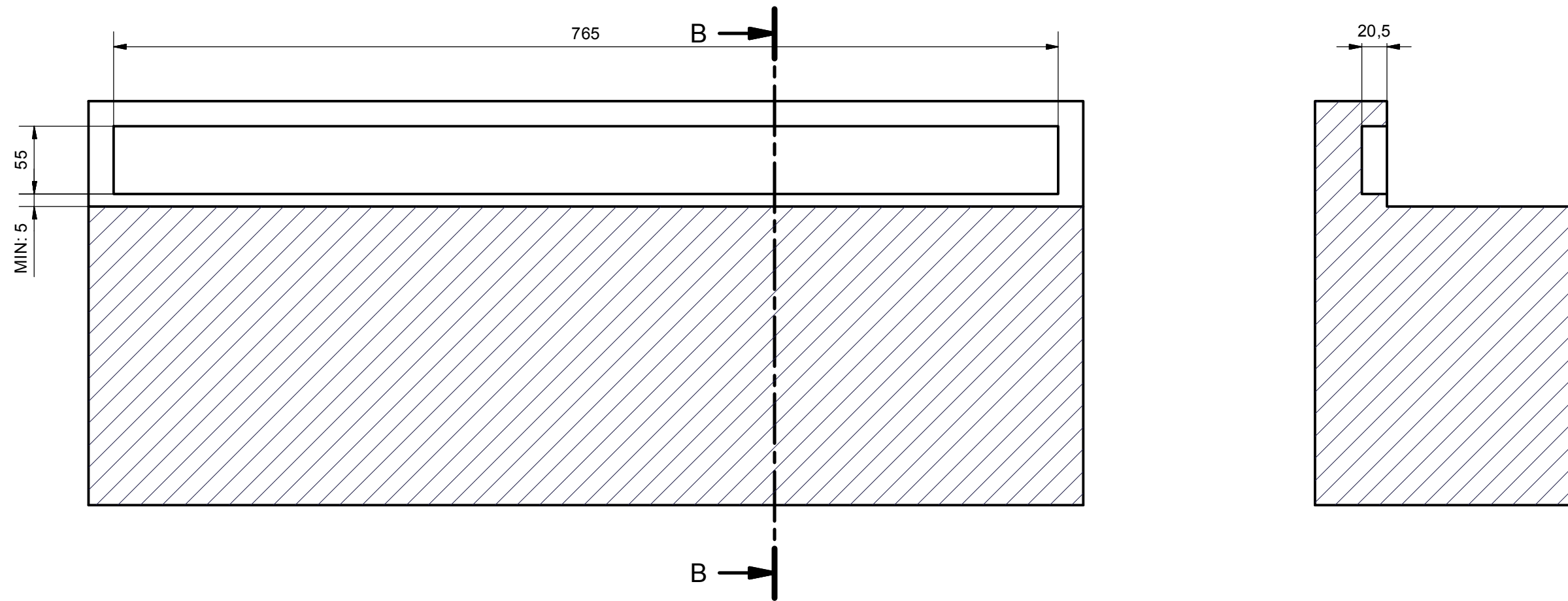


SPESSORE PIANO/GUIDA MIN: 2 mm
THICKNESS PLANE/SLIDE

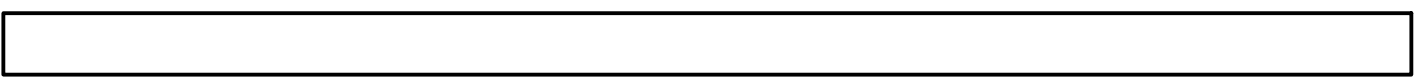
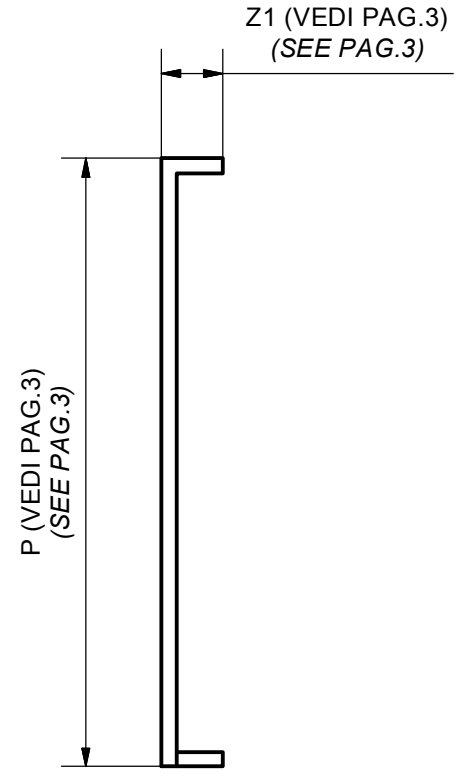
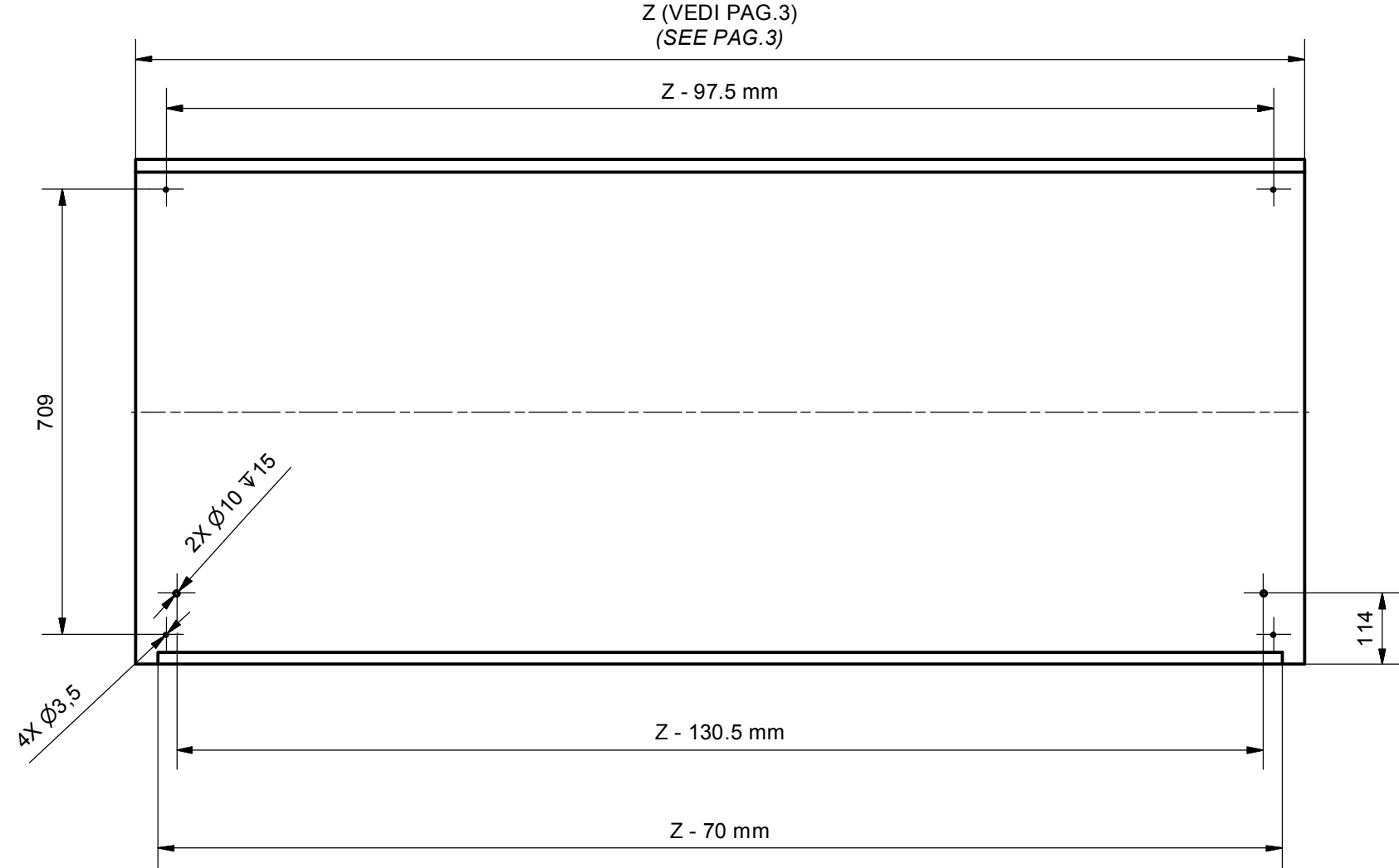


DIMENSIONE - DIMENSION	SIMBOLO - SYMBOL	
LUCE VERTICALE - VERTICAL FREE SPACE	H	MIN: 60 mm
PROFONDITA' INTERNA - INTERNAL FREE SPACE	P	MIN: 800 mm
LARGHEZZA INTERNA MODULO - CABINET INTERNAL WIDTH	L	MIN: 2000 mm MAX: 2600 mm
SPESSORE PIANO - PLANE THICKNESS	S	MIN: 20 mm
SPESSORE SPALLE - SIDE THICKNESS	S1	MIN: 40 mm
LARGHEZZA PIANI - PLANE WIDTH	Z	L - 5 mm
ALTEZZA FRONTE - FRONT HEIGHT	Z1	H+S-5
APERTURA PIANI - OPENING PLANE	E	640 mm

DIMENSIONI MODULO CABINET DIMENSIONS



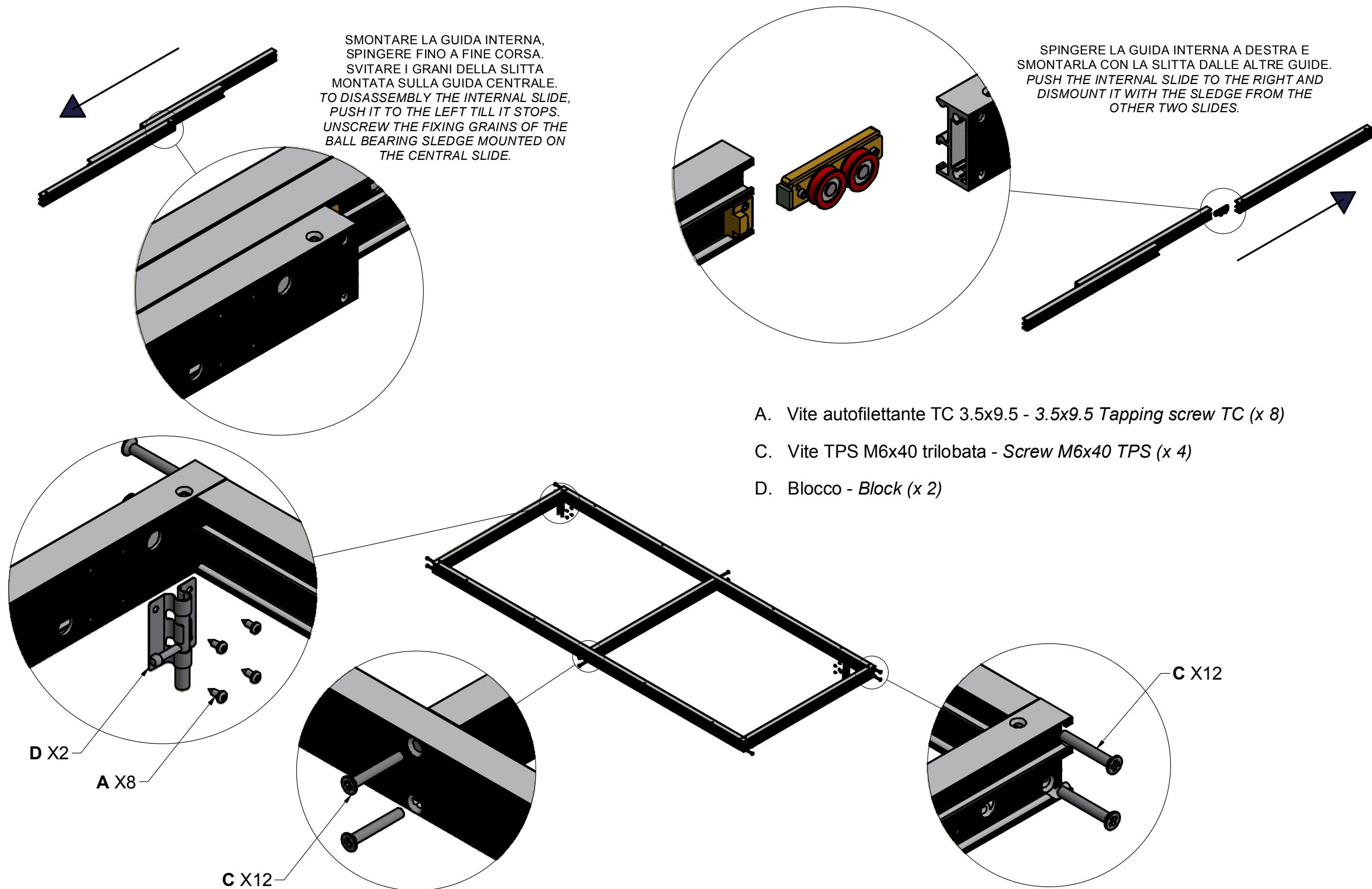
DIMENSIONI PIANO PLANE DIMENSIONS



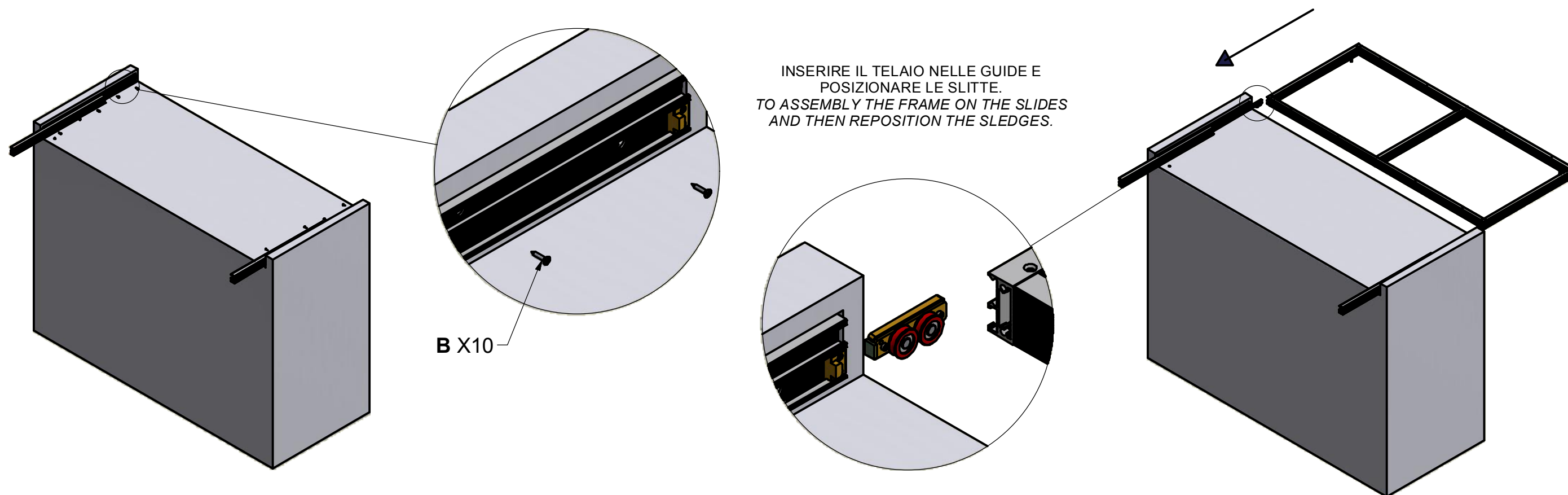
MONTAGGIO DEL MECCANISMO SUL MOBILE MOUNTING OF THE MECHANISM ON THE CABINET

SMONTARE LA GUIDA INTERNA,
SPINGERE FINO A FINE CORSA.
SVITARE I GRANI DELLA SLITTA
MONTATA SULLA GUIDA CENTRALE.
TO DISASSEMBLY THE INTERNAL SLIDE,
PUSH IT TO THE LEFT TILL IT STOPS.
UNSCREW THE FIXING GRAINS OF THE
BALL BEARING SLEDGE MOUNTED ON
THE CENTRAL SLIDE.

SPINGERE LA GUIDA INTERNA A DESTRA E
SMONTARLA CON LA SLITTA DALLE ALTRE GUIDE.
PUSH THE INTERNAL SLIDE TO THE RIGHT AND
DISMOUNT IT WITH THE SLEDGE FROM THE
OTHER TWO SLIDES.



MONTAGGIO DEL MECCANISMO SUL MOBILE MOUNTING OF THE MECHANISM ON THE CABINET



B. Vite truciolare 3.5x16 - 3.5x16 chipboard screw (x 10)

