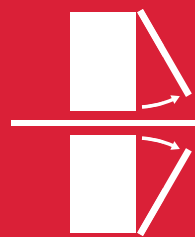


# Link Opening System

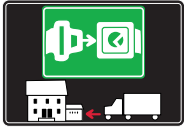


OPENING  
SYSTEMS  
FOR FLAP  
AND DROP  
DOWN  
DOORS



# SYMBOLS AND FINISHES LEGEND

## SYMBOLS



= SHELF SAFELY LOCKED DURING TRANSPORTATION AND AT HOME.



= ANTI-TURNOVER LOCKING SYSTEM



= NORMS / PATENTS



= PHILLIPS / POZIDRIV



= WITH BUFFER



= PART NO.



= BLADE SLOT



= WITH MAGNET



= PCS. PER PACKAGE



= COMBI SLOT



= HEXAGONAL SOCKET



= NEWTON



= CAPACITY LOADING



= HEXALOBULAR SOCKET



= FRICTION



= WOOD / GLASS THICKNESS



= COUNTERSUNK HEAD



= AUTOMATIC



= HOLE DIAMETER



= PAN HEAD



= DROP DOWN



= DIAMETER



= FLANGE HEAD



= LENGTH



= FLAT HEAD



= STANDARD HINGE



= HEIGHT



= TRILOBULAR SCREW



= KIMANA HINGE



= RIGHT VERSION



= SELF-TAPPING SCREW



= FLAP HINGE



= LEFT VERSION



= EURO THREAD



= WITH SPRING



= SETTING CODE



= METRIC THREAD



= WITHOUT SPRING



= PCS. PER PAD



= PRE-INSERTED SCREW



= REVERSED SPRING



= CUT ON REQUEST



= PRE-INSERTED SCREW AND SPREADING BUSH



= SELF ADHESIVE



= WITH FLANGE

NOTE: Printing errors and omissions may exist despite our best efforts to ensure accuracy. We reserve the right to alter specifications without notice.

## MATERIALS

**ZA** = Zinc Alloy

**ST** = Steel

**HSS** = High Speed Steel

**BR** = Brass

**ABS** = Acrylonitrile Butadiene Styrene

**ZAnk** = Nickel-plated Zinc Alloy

**STzk** = Zinc-plated Steel

**AL** = Aluminium

**WD** = Wood

**EVA** = Ethylene Vinyl Acetate

**EP** = **ENGINEERING PLASTIC**

+ **EP** = other engineering plastic available on request

**SR** = **SOFT RUBBER**

+ **SR** = other soft rubber available on request

**EPn** = Natural Engineering Plastic

**EPc** = Clear Engineering Plastic

**SRn** = Natural Soft Rubber

**EPw** = White Engineering Plastic

**EPg** = Grey Engineering Plastic

**SRw** = White Soft Rubber

**EPwg** = Water Green Engineering Plastic

**SRb** = Black Soft Rubber



## FINISHES



+ **OTHER FINISHES AVAILABLE ON REQUEST**

PART NO.	FINISHES	PART NO.	FINISHES	PART NO.	FINISHES
00	Insignificant finish	IF	Middle Grey	UT	T-Met 9007
AA	Natural	IJ	Light Grey	UZ	T-Met
AB	White	IL	Grey 20	WA	Bronzed
AE	White 9010	IN	Grey met. 26	WI	Burnished
EA	Black	JB	Bright Aluminium	XD	Satin-finished Steel
EC	Matt Black	JC	Aluminium - Chrome	YA	Nickel-plated
EE	Anthracite	JD	Matt Aluminium	YB	Bright Nickel-plated
EW	Grey 9007	JE	Satin-finished Aluminium	YC	Matt Nickel-plated
FU	Gunmetal	JF	Aluminium - Brass	YD	Satin-finished Nickel-plated
FV	Gunmetal V52	JG	Aluminium 5	YQ	Black Nickel
GR	Raw	JL	Aluminium PE 11	Z9	Black Zinc
HA	Brass-Plated	JM	Aluminium RAL 9006	ZA	Zinc alloy
HH	Tropicalized	KA	Chrome	ZN	Zinc-plated
HL	Raw Brass	KB	Bright Chrome	ZQ	Bright Gold
HX	Graphite	KC	Matt Chrome	ZY	Titanium
IA	Grey	NN	Metallic Beige	ZZ	Clear
IB	Metallic Grey	RO	Red		

## LINK



PATENTED

LINK is opening system with an unhanded mechanism for cabinet sides conceived for drop down doors. It is the only mechanism on the market that guarantees both a smooth opening and a soft closing of the door.

Installation is carried out through very simple drilling operations which don't require neither mills nor grooves. A complete range suits all the doors weights and dimensions.

LINK is suitable for very shallow cabinets with a minimum depth of 200 mm.

The installation is really simple: once the mechanism is fixed on the side, the metal rope end has to be pulled out and the small sphere inserted into the narrow slot of the door bracket. The sphere catches into the bayonet cavity and is permanently secured in position with the provided cover cap.

The opening angle adjustment for nearby doors alignment is carried out by using an S3 allen wrench.

The zinc alloy nickel plated mechanism cover, as well as the door bracket, can be supplied painted on request.

All the parts are in steel, zinc alloy nickel-plated and engineering plastic.



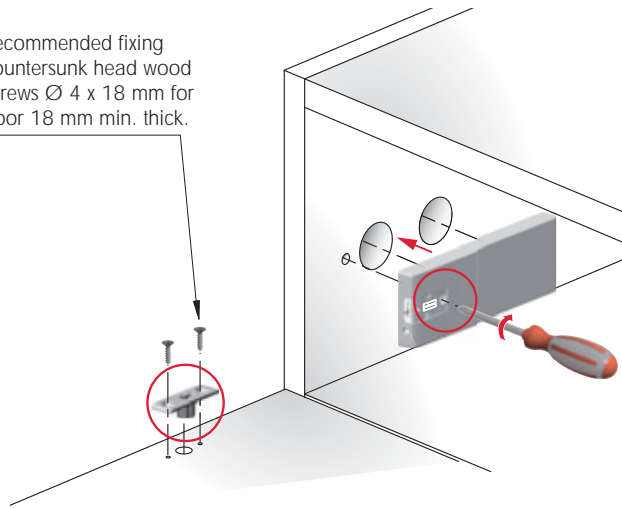


**INSTALLATION**

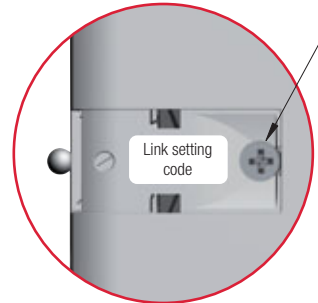


The door bracket has to be placed with the narrow part of the drop-shaped slot facing the cabinet.

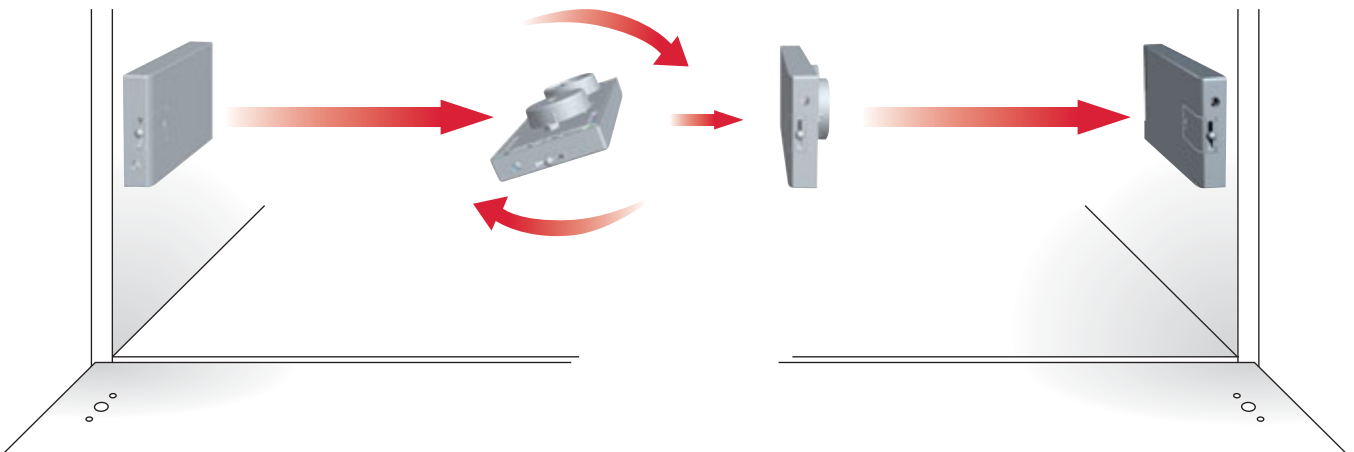
Recommended fixing countersunk head wood screws  $\varnothing 4 \times 18$  mm for door 18 mm min. thick.



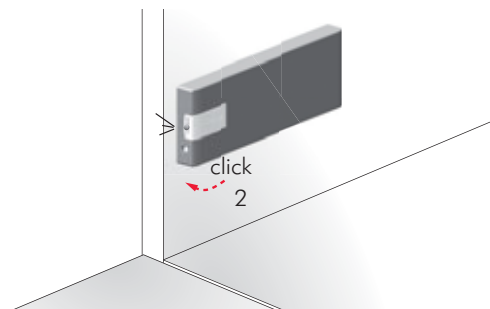
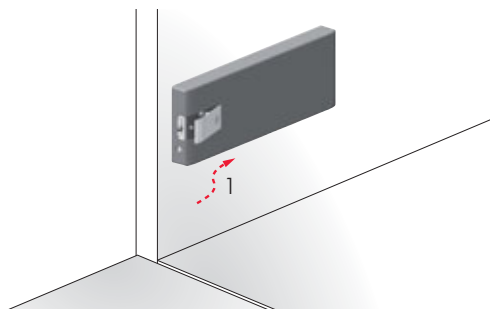
Pre-inserted screw  $\varnothing 3,5 \times 16$  mm - PZ2.



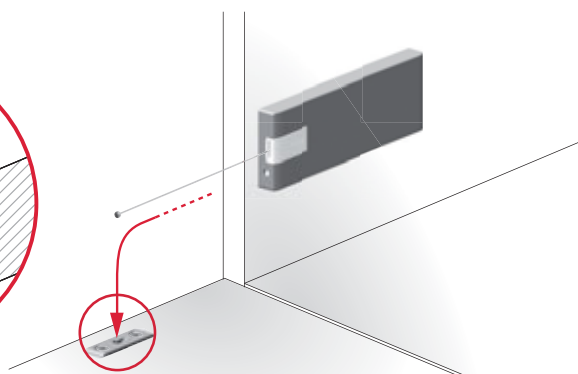
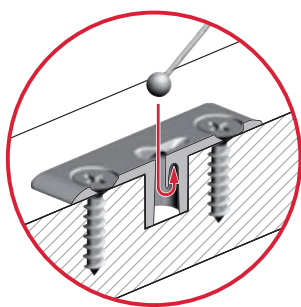
**UNHANDED MECHANISM**



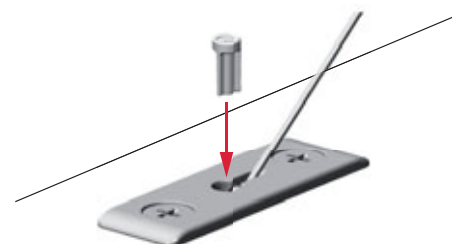
**COVER CAP INSERTION**

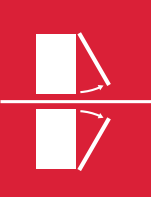


**METAL WIRE INSERTION ONTO THE DOOR BRACKET**

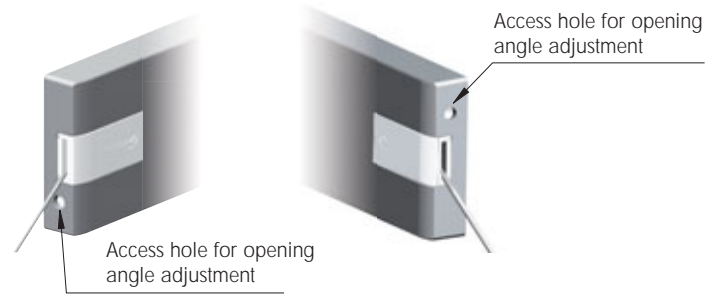
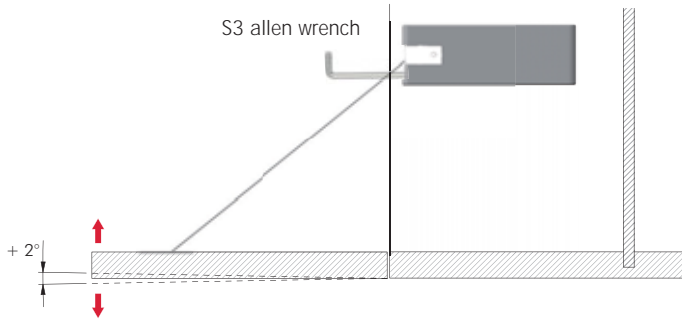


**PLASTIC WIRE LOCKING**

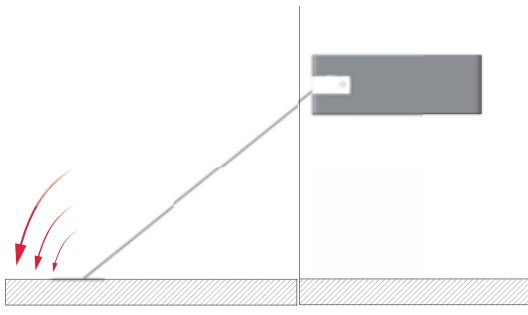




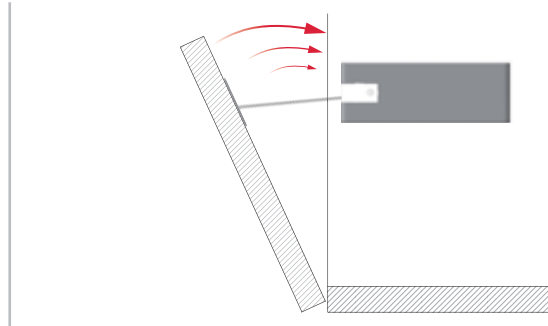
### ADJUSTMENT



### SOFT OPENING

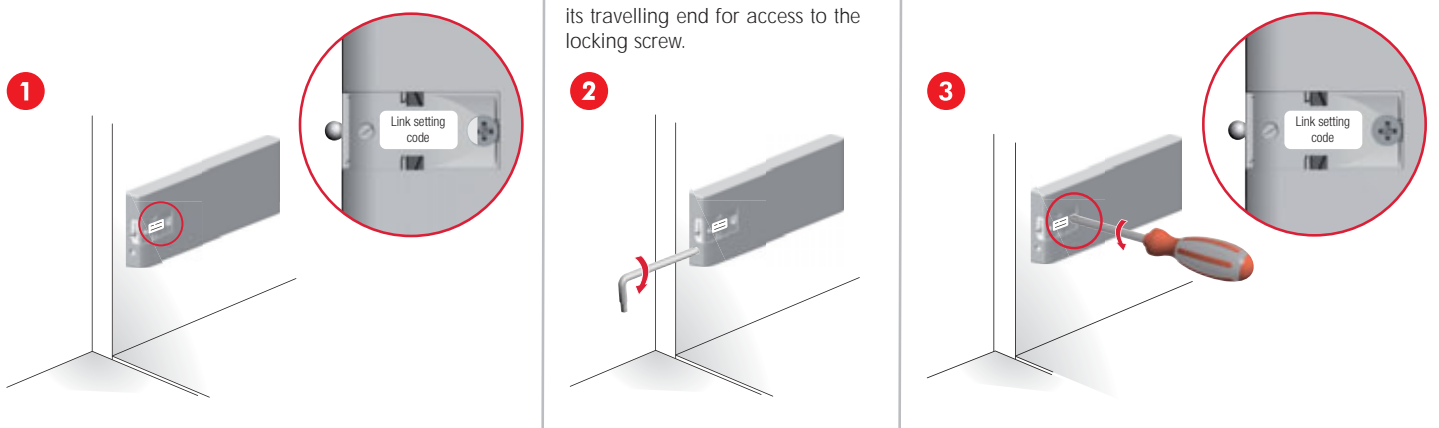


### SMOOTH CLOSING

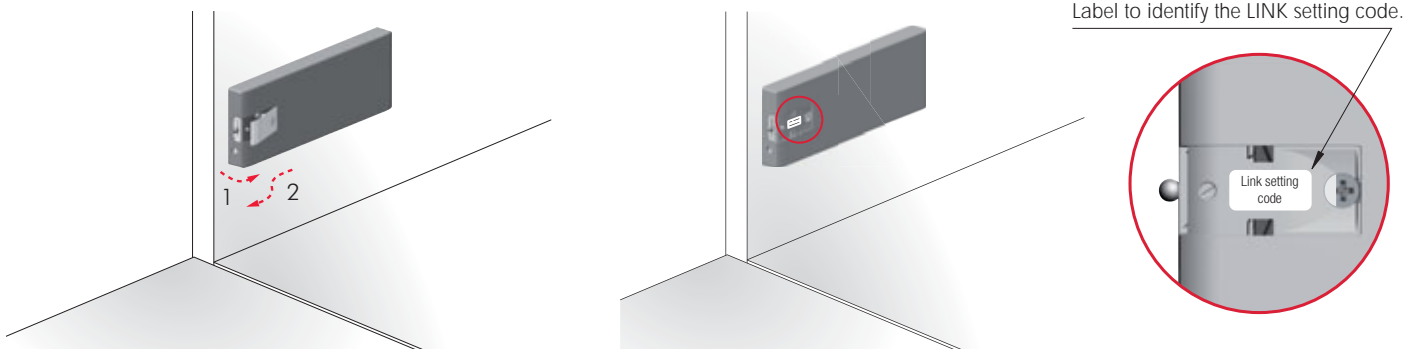


Soft opening and smooth closing are guaranteed only when opening and closing cycles are fully carried out.

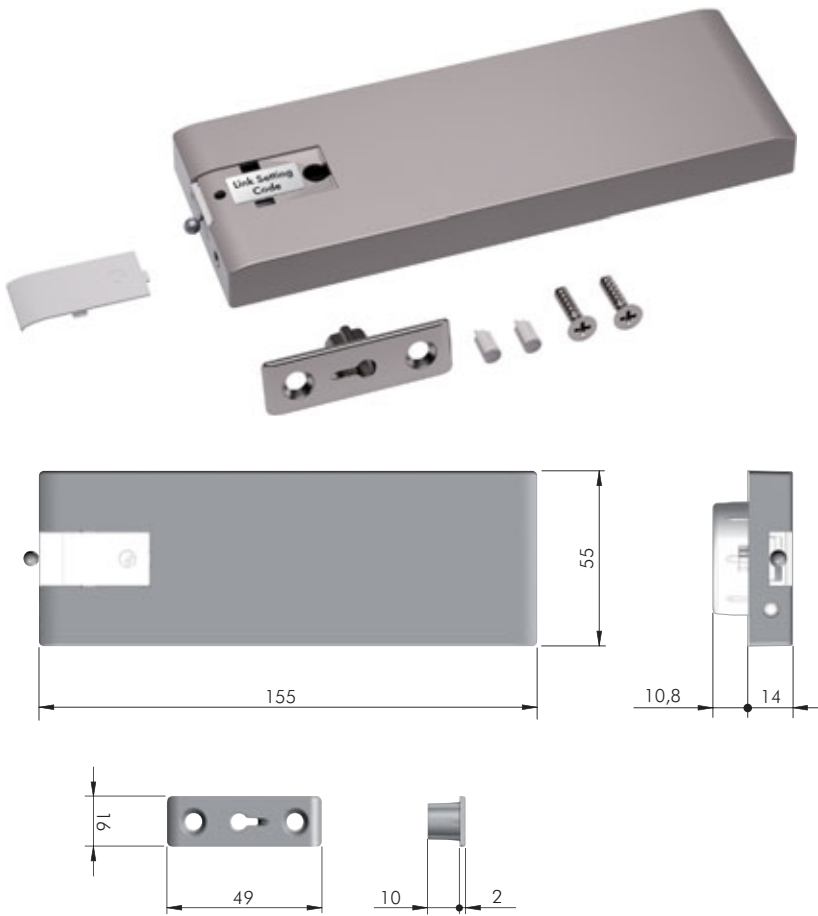
### LINK REMOVAL



### LINK SETTINGS IDENTIFICATION



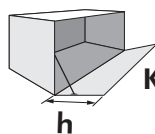




					+		
ZA	EP	ST					= 12 pcs.
47005020UZ	AE	JL	FU			A262	
47020020UZ	AE	JL	FU			N262	
47030020UZ	AE	JL	FU			U262	
47035020UZ	AE	JL	FU			AL280	
47038020UZ	AE	JL	FU			AQ300	
47040020UZ	AE	JL	FU			AQ335	

NOTE: LINK is supplied in carton box including 1 piece, door bracket nickel-plated, countersunk fixing screws  $\varnothing 4 \times 18$  mm nickel-plated, cover cap and fitting guide.





Kg = Door weight including the possible handle.

Rev. 02

Kg	Link	h															
		250	275	300	325	350	375	400	425	450	480						
1,75	x2	-	-	-	-	-	-	-	-	-	-	A262	A262	A262	A262	A262	A262
	x1	A262	N262	N262	N262	N262	N262	U262	U262	-	-	-	-	-	-	-	-
2,00	x2	-	-	-	-	-	-	A262	A262	A262	A262	A262	A262	A262	A262	A262	N262
	x1	N262	N262	N262	N262	U262	U262	-	-	-	-	-	-	-	-	-	AL280
2,25	x2	-	-	-	-	A262	A262	A262	A262	A262	A262	A262	N262	A262	N262	A262	N262
	x1	N262	N262	U262	U262	-	-	-	-	-	-	-	-	-	-	-	AL280
2,50	x2	-	-	A262	A262	A262	A262	A262	A262	A262	N262	A262	N262	A262	N262	A262	U262
	x1	N262	U262	U262	-	-	-	-	-	-	-	-	-	-	-	AL280	AL280
2,75	x2	-	-	A262	A262	A262	A262	A262	N262	A262	N262	A262	U262	A262	U262	A262	U262
	x1	U262	U262	-	-	-	-	-	-	-	-	-	-	AL280	AL280	U262	U262
3,00	x2	A262	A262	A262	A262	A262	N262	A262	N262	A262	U262	A262	U262	N262	U262	N262	U262
	x1	U262	-	-	-	-	-	AL280	AL280	AL280	AL280	AL280	AQ300	AQ300	AQ300	AQ300	AQ300
3,25	x2	A262	A262	A262	N262	A262	N262	A262	U262	A262	U262	N262	U262	N262	U262	U262	U262
	x1	-	-	-	-	-	-	AL280	AL280	AL280	AL280	AQ300	AQ300	AQ300	AQ300	AQ300	AQ300
3,50	x2	A262	A262	A262	N262	A262	N262	A262	U262	N262	U262	N262	U262	U262	U262	U262	U262
	x1	-	-	-	-	-	-	AL280	AL280	AL280	AQ300	AQ300	AQ300	AQ300	AQ300	AQ300	AQ300
3,75	x2	A262	N262	A262	N262	A262	U262	A262	U262	N262	U262	N262	U262	U262	U262	N262	AL280
	x1	-	-	-	-	AL280	AL280	AQ300	AQ300	AQ300	AQ300	AQ300	AQ300	AQ300	AQ300	AQ335	AQ335
4,00	x2	A262	N262	A262	U262	A262	U262	N262	U262	N262	U262	U262	U262	U262	U262	AL280	AL280
	x1	-	-	-	-	AL280	AL280	AQ300	AQ300	AQ300	AQ300	AQ300	AQ300	AQ300	AQ300	AQ335	AQ335
4,25	x2	A262	N262	A262	U262	N262	U262	N262	U262	U262	U262	N262	AL280	U262	AL280	U262	AL280
	x1	-	-	AL280	AQ300	AQ300	AQ300	AQ300	AQ300	AQ300	AQ300	AQ300	AQ300	AQ300	AQ300	AQ335	AQ335
4,50	x2	A262	U262	A262	U262	N262	U262	U262	U262	N262	AL280	U262	AL280	U262	AL280	U262	AL280
	x1	AL280	AL280	AQ300	AQ300	AQ300	AQ300	AQ300	AQ300	AQ335	AQ335	AQ335	AQ335	-	-	-	-
4,75	x2	A262	U262	N262	U262	U262	U262	U262	U262	N262	AL280	U262	AL280	U262	AL280	AL280	AL280
	x1	AL280	AQ300	AQ300	AQ300	AQ300	AQ300	AQ300	AQ300	AQ335	AQ335	AQ335	AQ335	-	-	-	-
5,00	x2	N262	U262	N262	U262	U262	U262	N262	AL280	U262	AL280	U262	AL280	AL280	AL280	AL280	AL280
	x1	AL280	AQ300	AQ300	AQ300	AQ300	AQ300	AQ300	AQ300	AQ300	AQ300	AQ300	AQ300	AQ300	AQ300	AQ300	AQ300
5,25	x2	N262	U262	U262	U262	U262	U262	N262	AL280	U262	AL280	U262	AL280	AL280	AL280	AL280	AL280
	x1	AL280	AQ300	AQ300	AQ300	AQ300	AQ300	AQ335	AQ335	-	-	-	-	-	-	-	-
5,50	x2	N262	U262	U262	U262	N262	AL280	U262	AL280	U262	AL280	AL280	AL280	AL280	AL280	AL280	AQ300
	x1	AL280	AQ300	AQ300	AQ335	AQ335	AQ335	-	-	-	-	-	-	-	-	-	-
5,75	x2	U262	U262	U262	U262	N262	AL280	U262	AL280	AL280	AL280	AL280	AL280	AL280	AL280	AQ300	AQ300
	x1	AQ300	AQ300	AQ300	AQ335	AQ335	AQ335	-	-	-	-	-	-	-	-	-	-
6,00	x2	U262	U262	N262	AL280	U262	AL280	U262	AL280	AL280	AL280	AL280	AL280	AL280	AQ300	AL280	AQ300
	x1	AQ300	AQ335	AQ335	AQ335	-	-	-	-	-	-	-	-	-	-	-	-
6,25	x2	U262	U262	N262	AL280	U262	AL280	U262	AL280	AL280	AL280	AL280	AL280	AL280	AQ300	AQ300	AQ300
	x1	AQ300	AQ335	AQ335	AQ335	-	-	-	-	-	-	-	-	-	-	-	-
6,50	x2	N262	AL280	U262	AL280	U262	AL280	AL280	AL280	AL280	AL280	AL280	AL280	AL280	AQ300	AQ300	AQ300
	x1	AQ335	AQ335	-	-	-	-	-	-	-	-	-	-	-	-	-	-
6,75	x2	N262	AL280	U262	AL280	U262	AL280	AL280	AL280	AL280	AL280	AL280	AL280	AL280	AQ300	AQ300	AQ300
	x1	AQ335	AQ335	-	-	-	-	-	-	-	-	-	-	-	-	-	-
7,00	x2	U262	AL280	U262	AL280	AL280	AL280	AL280	AL280	AL280	AQ300	AL280	AQ300	AQ300	AQ300	AQ300	AQ335
	x1	AQ335	AQ335	-	-	-	-	-	-	-	-	-	-	-	-	-	-
7,50	x2	U262	AL280	AL280	AL280	AL280	AL280	AL280	AL280	AL280	AQ300	AQ300	AQ300	AQ300	AQ300	AQ300	AQ335
	x1	AQ335	-	-	-	-	-	-	-	-	-	-	-	-	-	-	-
8,00	x2	U262	AL280	AL280	AL280	AL280	AL280	AL280	AQ300	AQ300	AQ300	AQ300	AQ300	AQ300	AQ335	AQ335	AQ335
	x1	AL280	AL280	AL280	AL280	AL280	AQ300	AQ300	AQ300	AQ300	AQ300	AQ300	AQ300	AQ300	AQ335	AQ335	AQ335
8,25	x2	AL280	AL280	AL280	AL280	AL280	AQ300	AQ300	AQ300	AQ300	AQ300	AQ300	AQ300	AQ335	AQ335	AQ335	AQ335
	x1	AL280	AL280	AL280	AL280	AL280	AQ300	AQ300	AQ300	AQ300	AQ300	AQ300	AQ300	AQ335	AQ335	AQ335	AQ335
8,50	x2	AL280	AL280	AL280	AL280	AL280	AQ300	AQ300	AQ300	AQ300	AQ300	AQ300	AQ300	AQ335	AQ335	AQ335	AQ335
	x1	AL280	AL280	AL280	AL280	AL280	AQ300	AQ300	AQ300	AQ300	AQ300	AQ300	AQ300	AQ335	AQ335	AQ335	AQ335
8,75	x2	AL280	AL280	AL280	AL280	AL280	AQ300	AQ300	AQ300	AQ300	AQ300	AQ300	AQ300	AQ335	AQ335	AQ335	AQ335
	x1	AL280	AL280	AL280	AL280	AL280	AQ300	AQ300	AQ300	AQ300	AQ300	AQ300	AQ300	AQ335	AQ335	AQ335	AQ335
9,00	x2	AL280	AL280	AL280	AQ300	AL280	AQ300	AQ300	AQ300	AQ300	AQ335	AQ335	AQ335	AQ335	AQ335	AQ335	AQ335
	x1	AL280	AL280	AL280	AQ300	AL280	AQ300	AQ300	AQ300	AQ300	AQ335	AQ335	AQ335	AQ335	AQ335	AQ335	AQ335

CODE SETTINGS: A262, N262, U262, AL280 \*

CODE SETTINGS: AL280, AQ300, AQ335

\* For alternative applications with 1 mechanism LINK only, the remaining settings AQ300 – AQ335 might be required.

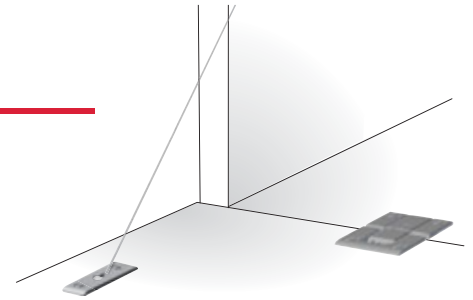
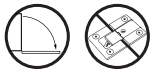
These are experimental results to be checked by the customer.

In accordance with the actual European regulation, we suggest to use two LINK mechanisms for each door. In case the door weight/dimensions are bigger than those reported on the chart, three or more LINK mechanisms might be used. Our technical department is at your disposal to test further cases out of this chart.

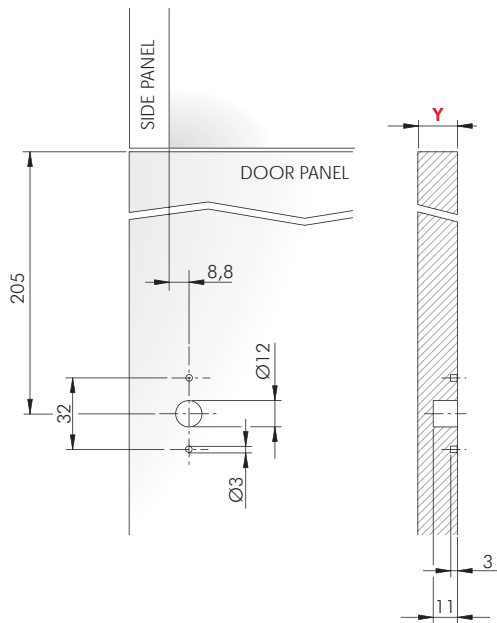




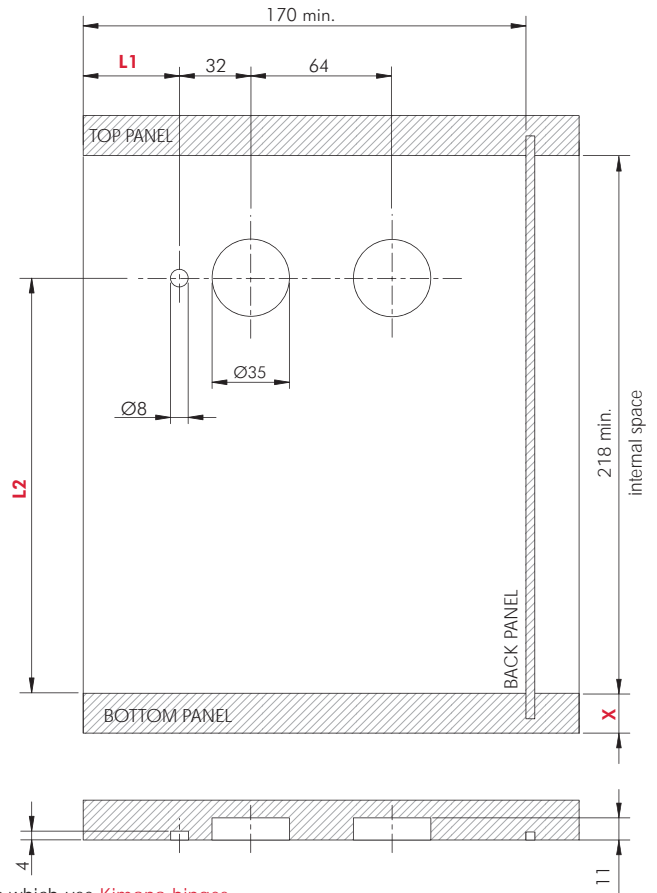
**LINK WITH KIMANA HINGE**



**DOOR PANEL DRILLING PLAN**

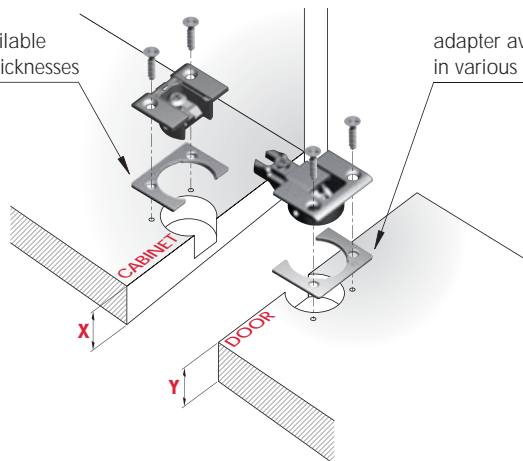


**SIDE PANEL DRILLING PLAN**



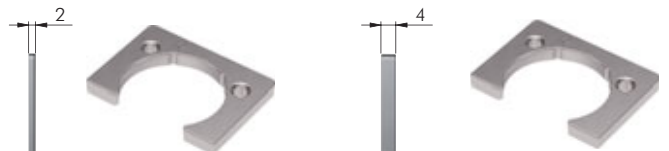
The dimensions of the above drilling plan refer to carcasses which use **Kimana hinges**.

adapter available in various thicknesses



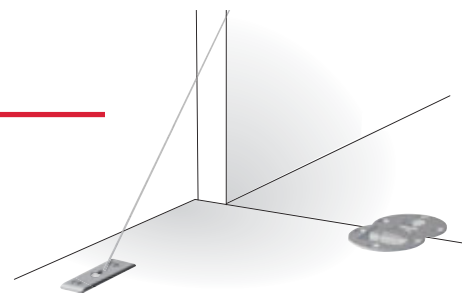
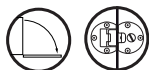
adapter available in various thicknesses

X +	Y +	L1	L2
16 + 4	16 + 2	43	190
16 + 4	19	44	190
18 + 2	18	44	189
18 + 2	19	44	189
19	16 + 2	42	187
19	19	43	187
20	20	43	187

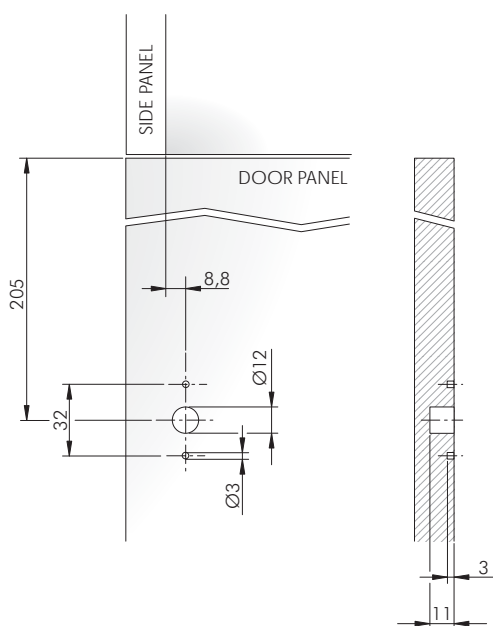


For Kimana and adapter details refer to section "HINGES".

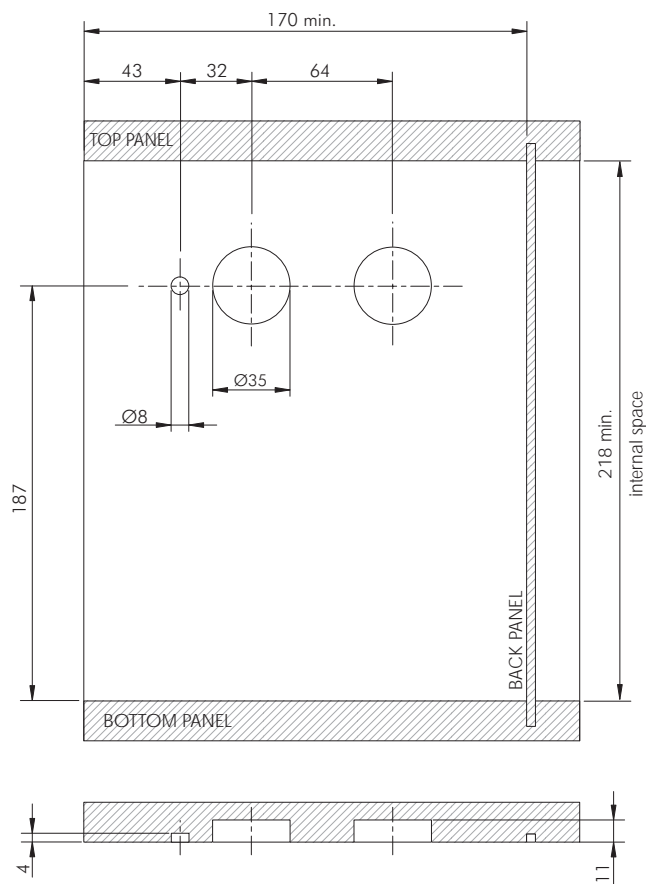
LINK WITH FLAP HINGES



DOOR PANEL DRILLING PLAN



SIDE PANEL DRILLING PLAN

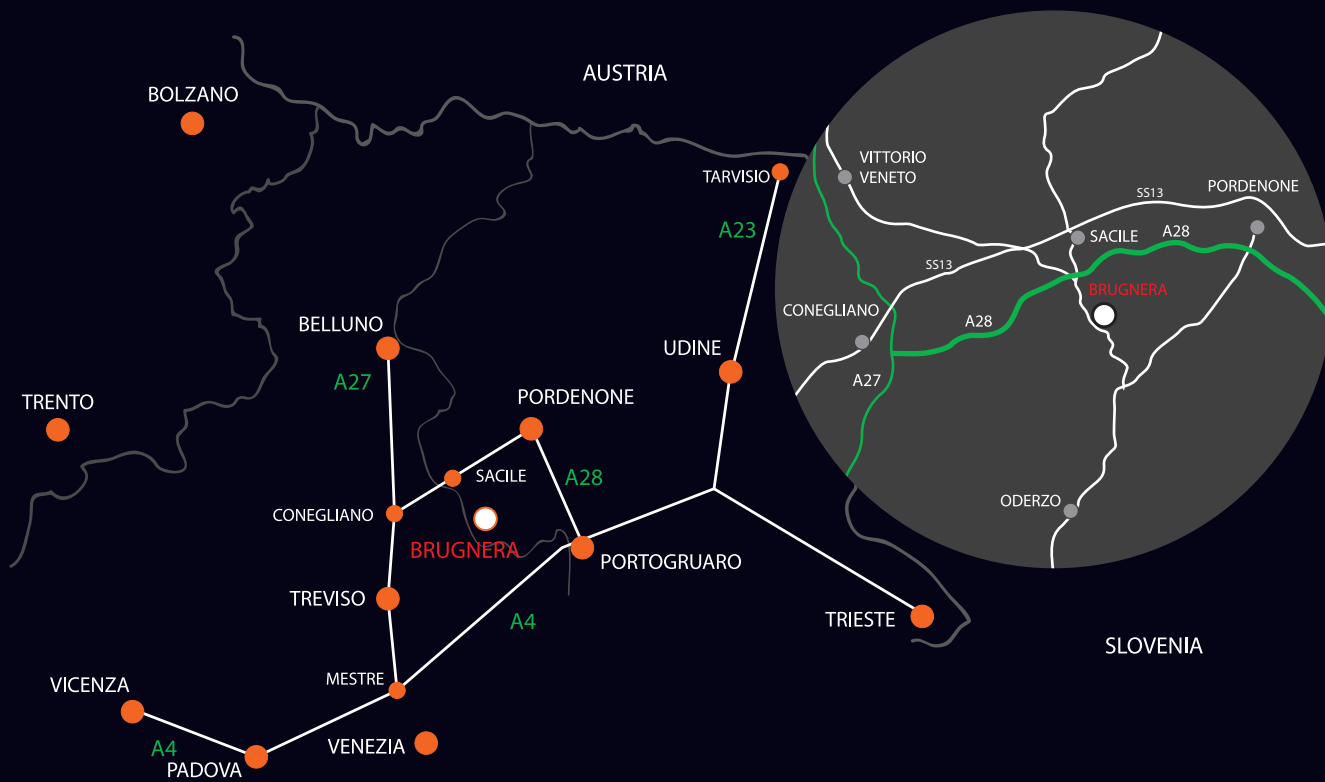


The dimensions of the drilling plan refer to carcasses which use flap hinges.

LINK WITH STANDARD UNSPRUNG HINGES



In case other hinges than KIMANA are used, it is necessary to contact an authorized dealer for a correct drilling scheme. For this purpose, use the form on the Italiana Ferramenta website (product LINK) to provide the required specifications.



[www.italianaferramenta.com](http://www.italianaferramenta.com)