

FLAP

ISTRUZIONI DI MONTAGGIO ASSEMBLY INSTRUCTIONS














MODELLI
MODELS:

411/78.1244.22 - Apertura / Opening : 600 mm

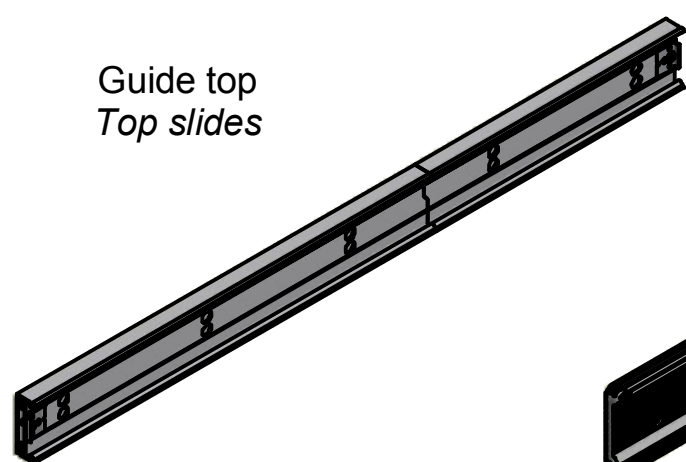
411/78.1244.22C - Apertura / Opening : 300 mm

CONTENUTO DELLA CONFEZIONE INCLUDED IN THE PACKAGING

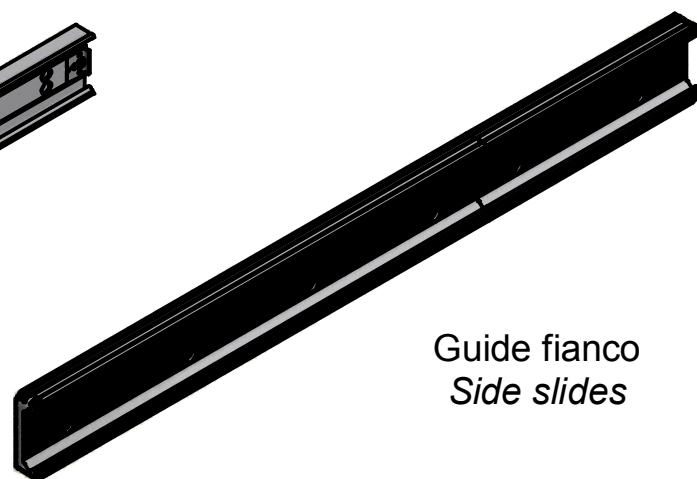
SACCHETTO ACCESSORI - ACCESSORIES

-  A. Chiave esa. da 3 - n° 3 Allen key (x 1)
-  B. Chiave esa. da 4 - n° 4 Allen key (x 1)
-  C. Chiave esa. da 5 - n° 5 Allen key (x 1)
-  D. Bussola mm 9x9.8 M6 - Bush mm 9x9.8 M6 (x 32)
-  E. Ruota Ø13.5 mm - Wheel Ø13.5 mm (x 3)
-  F. Ruota Ø 7.5 mm - Wheel Ø 7.5 mm (x 2)
-  G. Piastra di blocco - Lock plate (x 1)
- H. Staffa - Bracket (x 1)
-  I. Rondella mm 12x2 Ø6.3 - Washer 12x2 mm Ø6.3 (x 7)
-  J. Rondella mm 20x3 Ø6.5 - Washer 20x3 mm Ø6.5 (x 17)
-  K. Dado M6 - Nut M6 (x 12)
-  L. Vite TCCE M6x10 - Socked head cap screws M6x10 (x 26)
-  M. Vite TPS M6x12 CE - Screw M6x12 TPS CE (x 6)
-  N. Vite TCCE M6x65 - Socked head cap screw M6x65 (x 12)

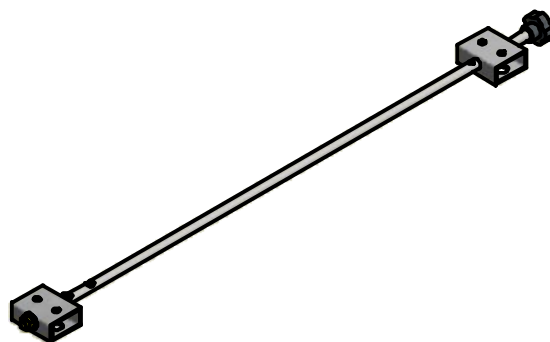
Guide top
Top slides



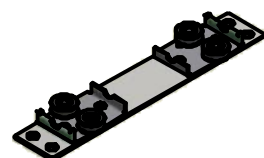
Guide fianco
Side slides



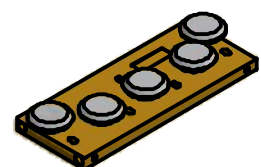
Tondino blocco
Locking rod



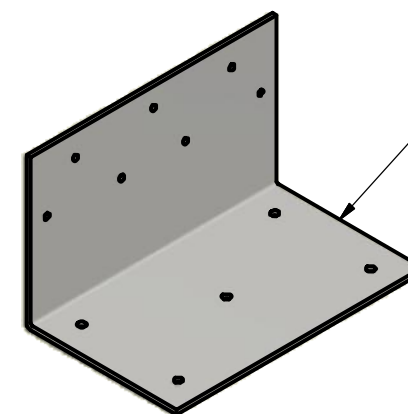
Piastra top
Top plate



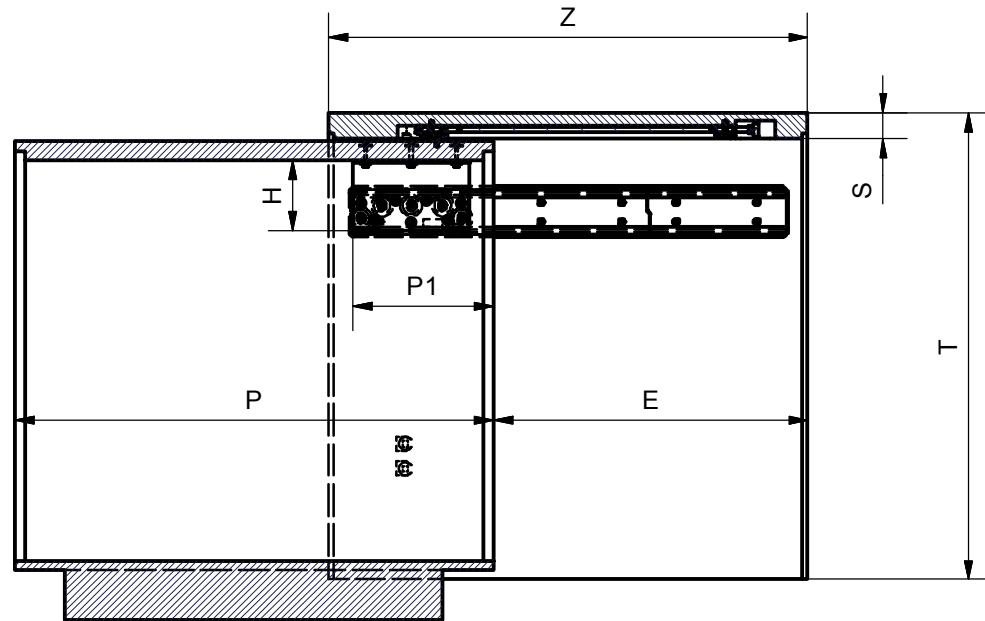
Piastra fianco
Side plate



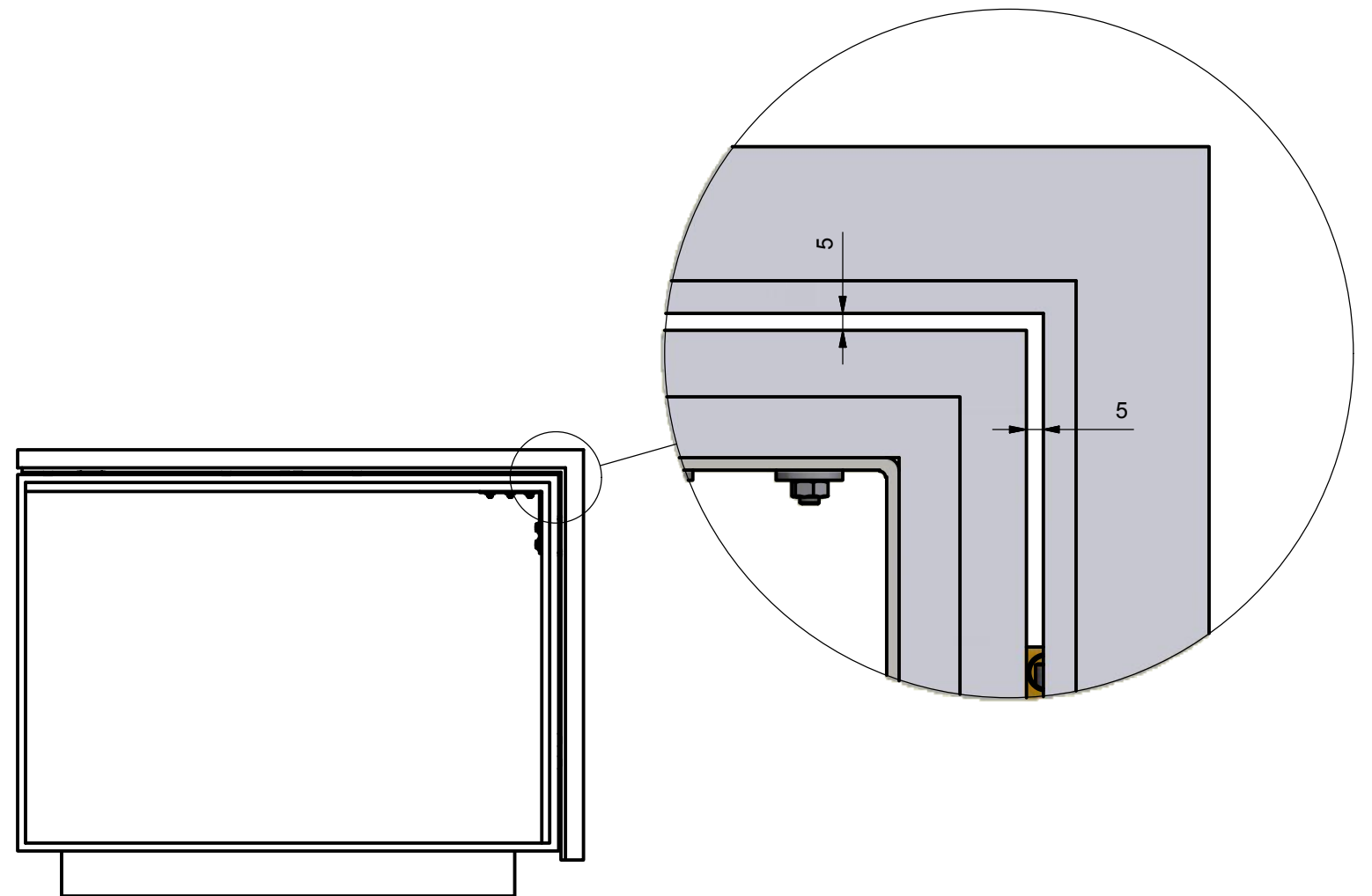
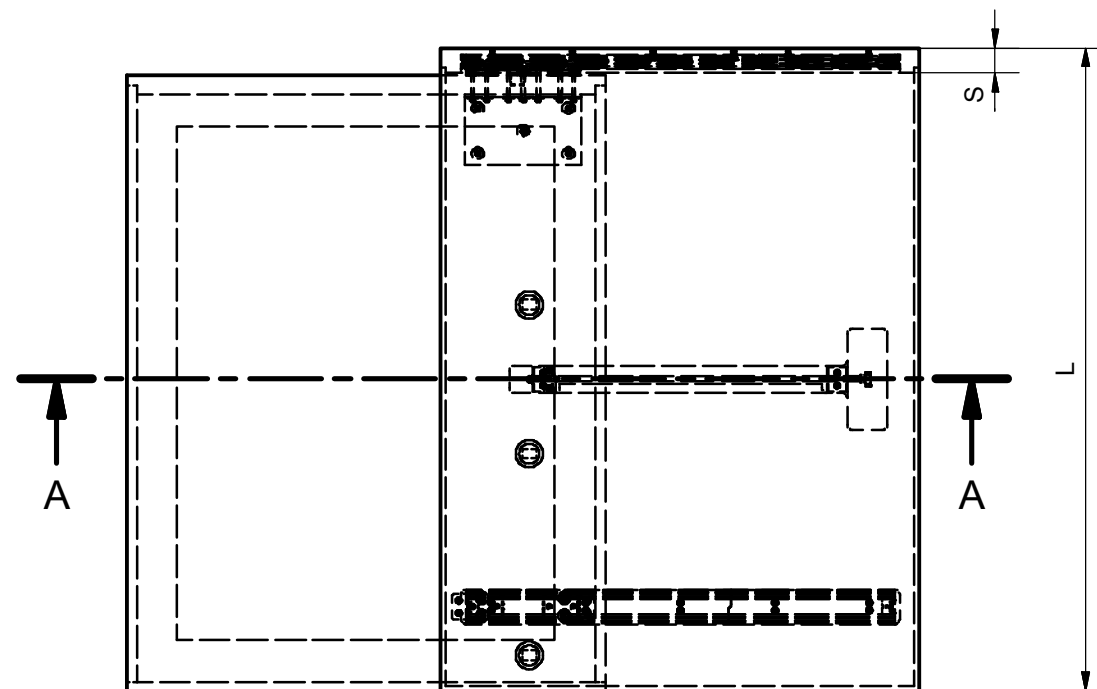
Staffa - Bracket (x 1)



DIMENSIONI GENERALI MOBILE GENERAL CABINET DIMENSIONS



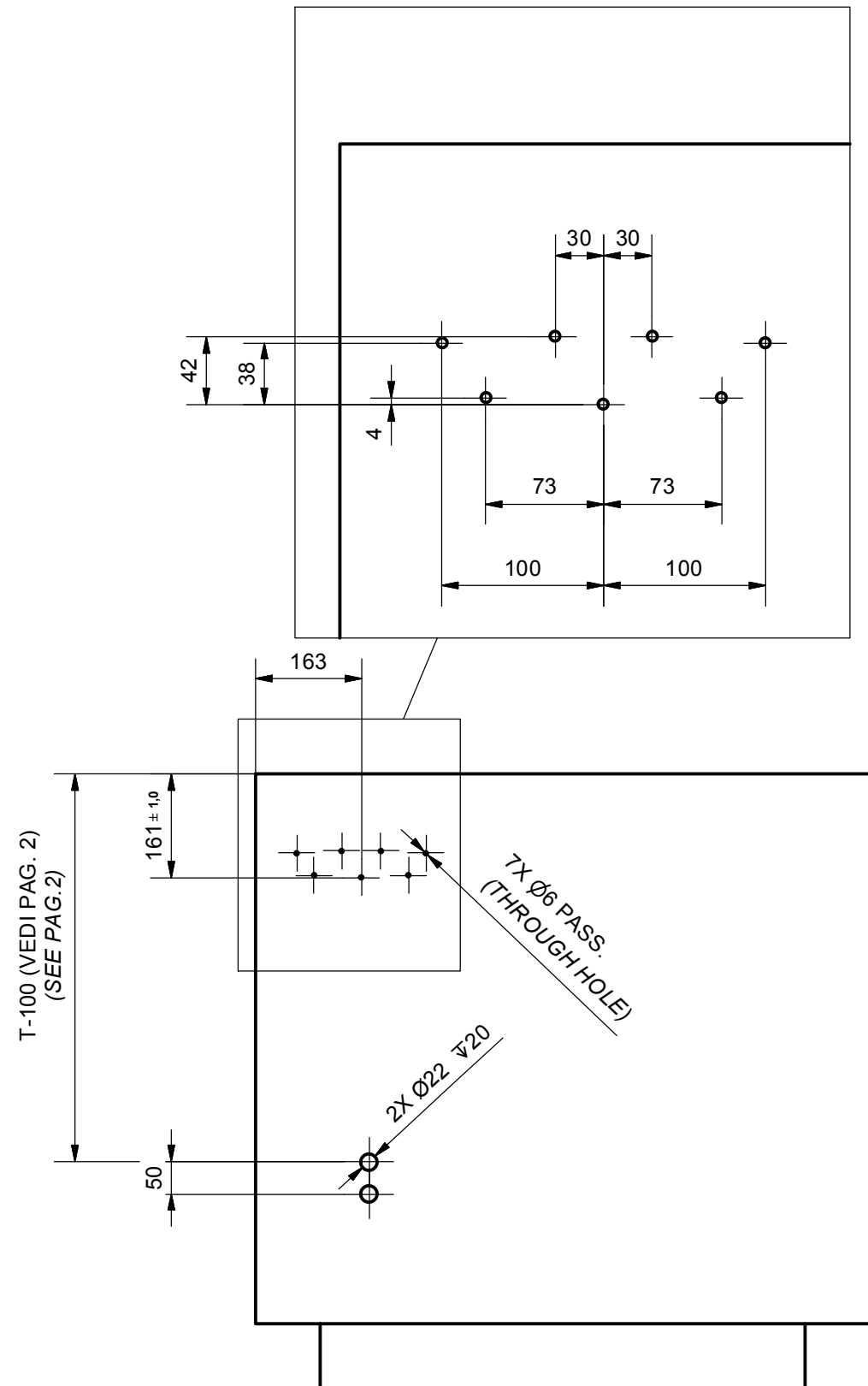
DIMENSIONE - DIMENSION	SIMBOLO - SYMBOL	mm
LUCE VERTICALE - VERTICAL SPACE	H	MIN: 150
PROFONDITA' INTERNA - INTERNAL DEPTH	P1	MIN: 280
LARGHEZZA INTERNA - INTERNAL WIDTH	P	MIN: 950
SPESSORE PIANO - TOP THICKNESS	S	MIN: 50
LARGHEZZA PIANO - TOP WIDTH	L	MIN: 600 MAX: 1300
LARGHEZZA ANTA - DOOR WIDTH	Z	MIN: 950
APERTURA PIANO - TOP OPENING	E	300/600
ALTEZZA - HEIGHT	T	MIN: 450



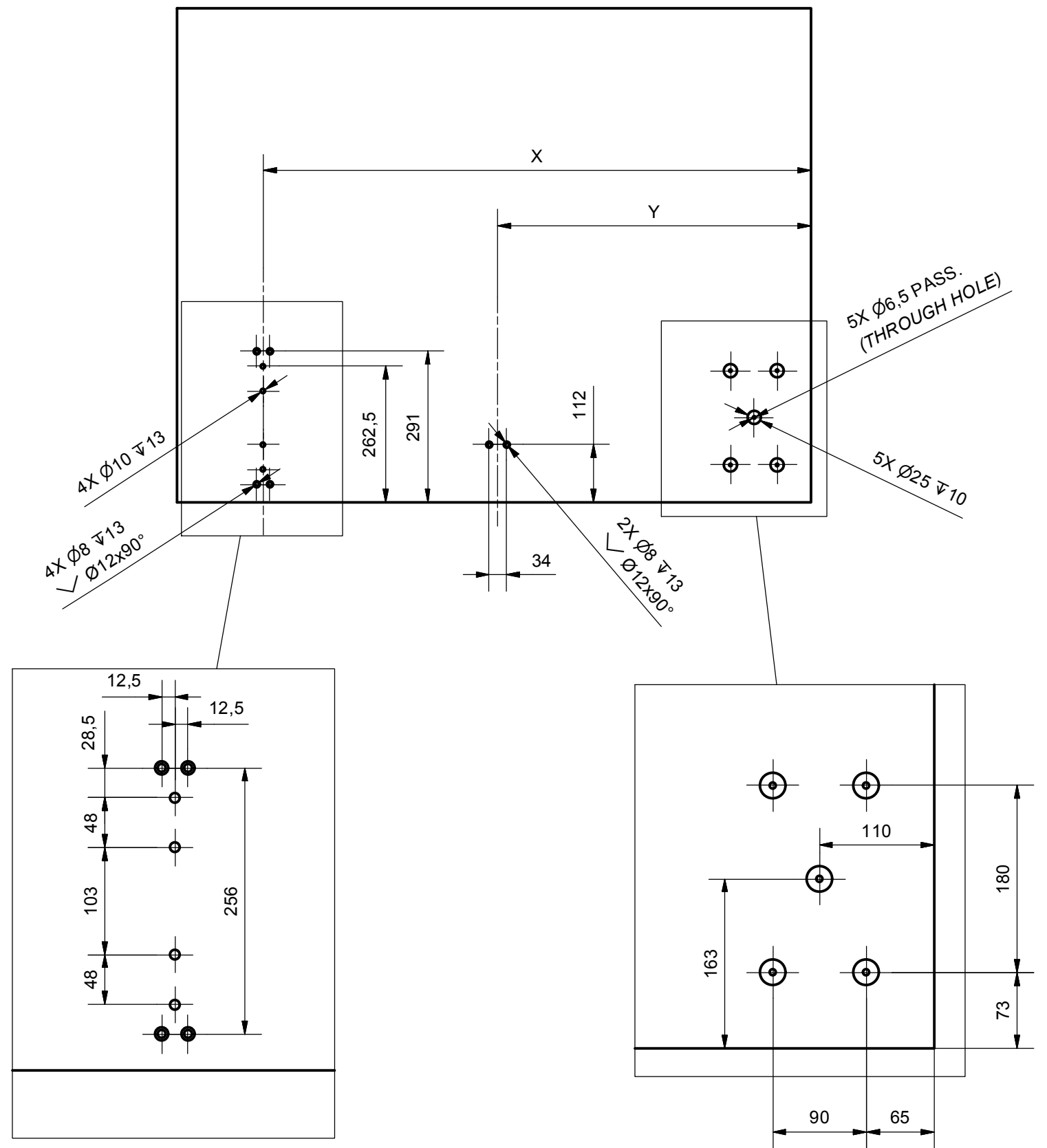
POSIZIONE FORI FISSAGGIO MECCANISMO

HOLES FOR MECHANISM POSITION

FIANCO - SIDE

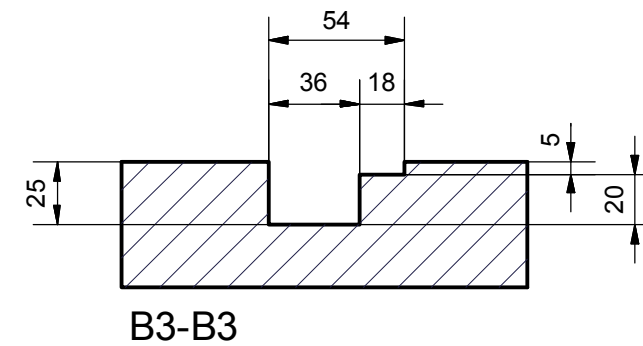
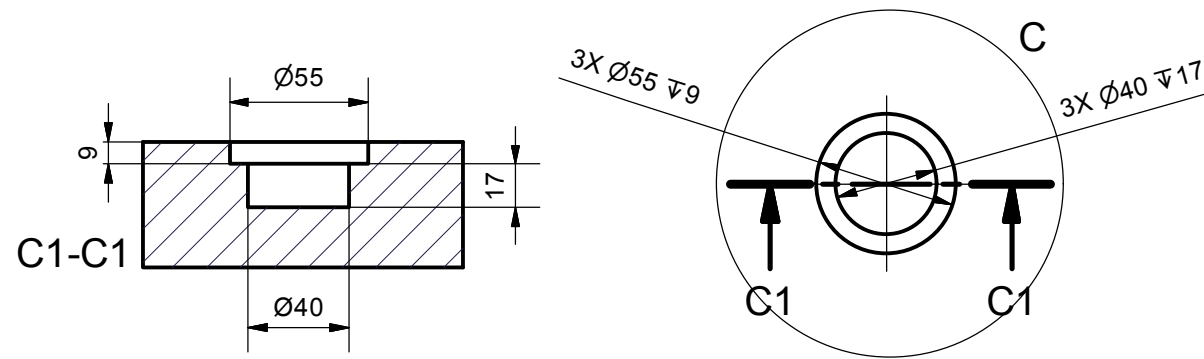


TOP

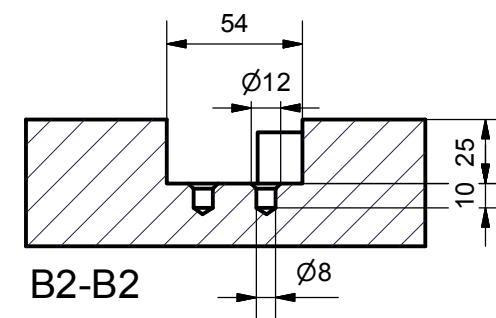


DIMENSIONI PIANO

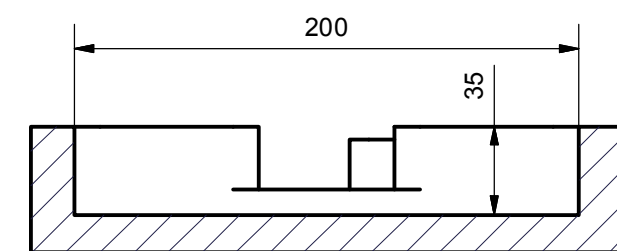
PLANE DIMENSIONS



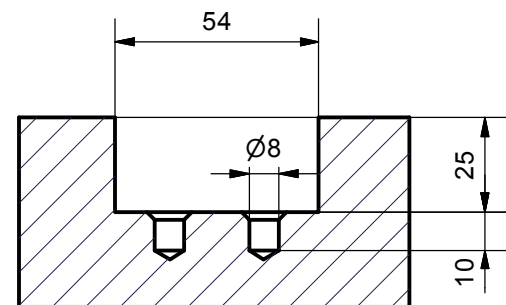
B3-B3



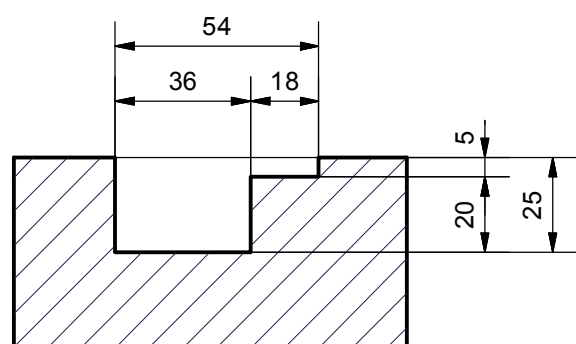
B2-B2



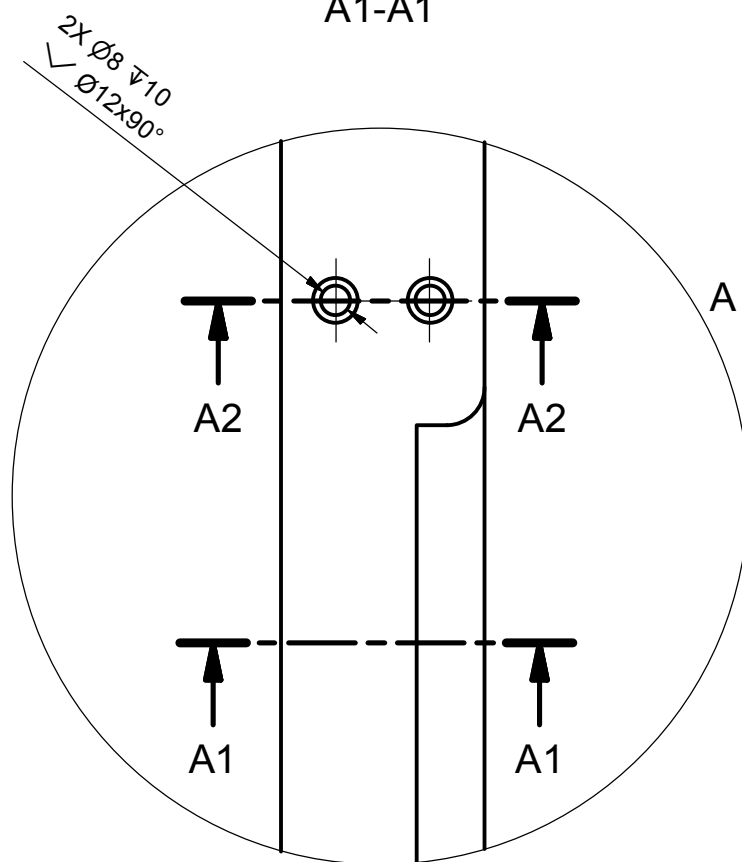
B1-B1



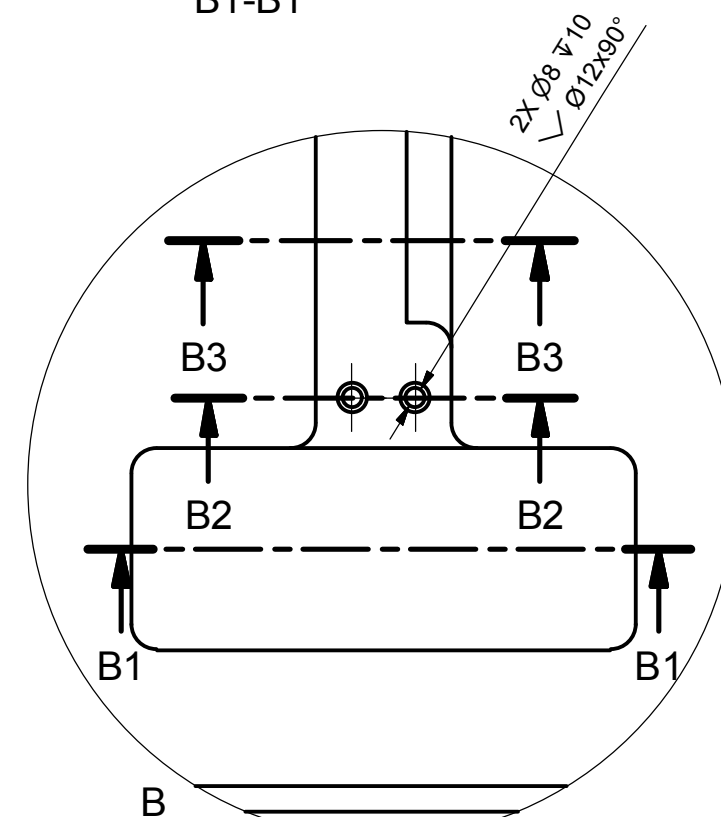
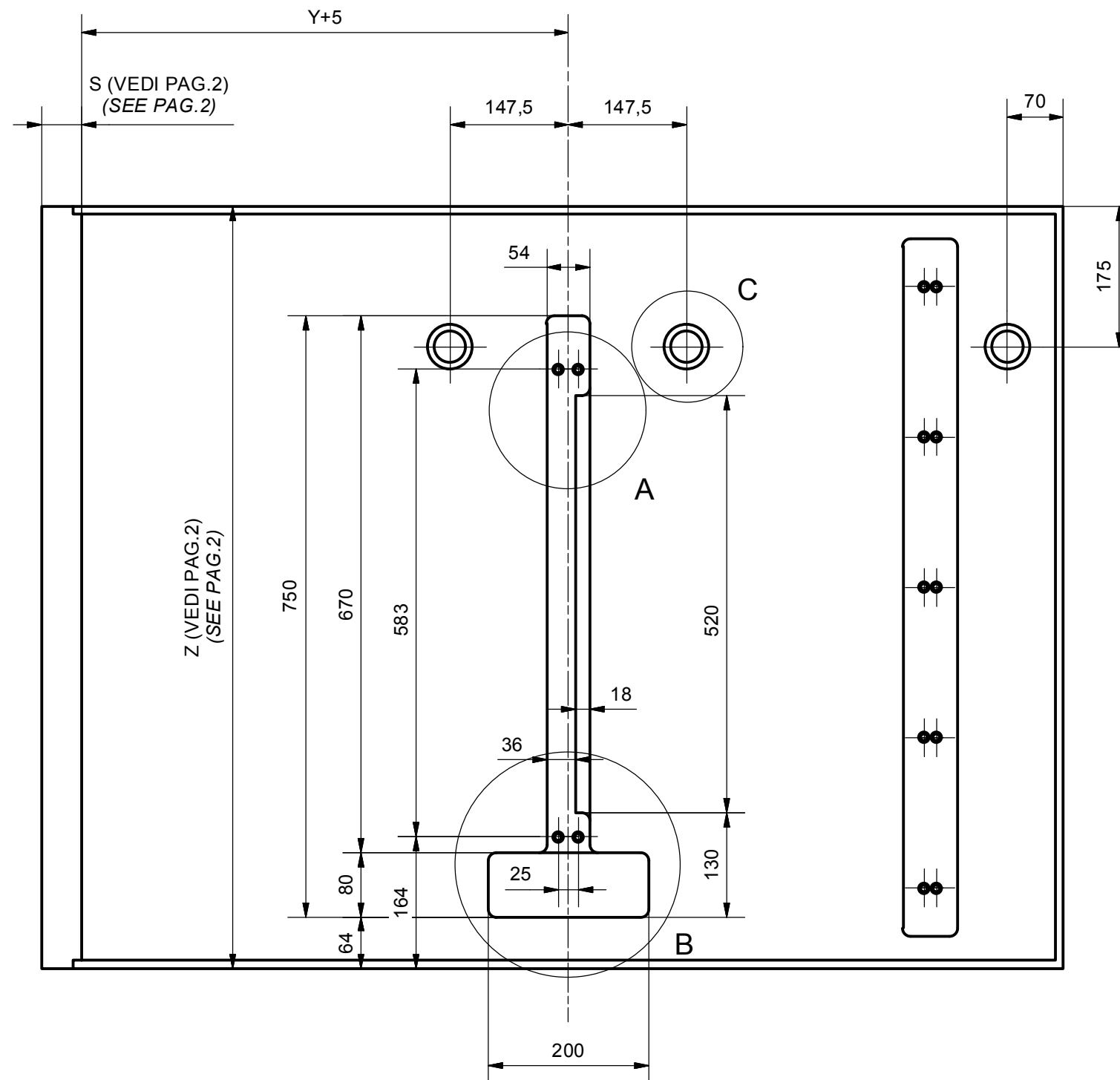
A2-A2



A1-A1

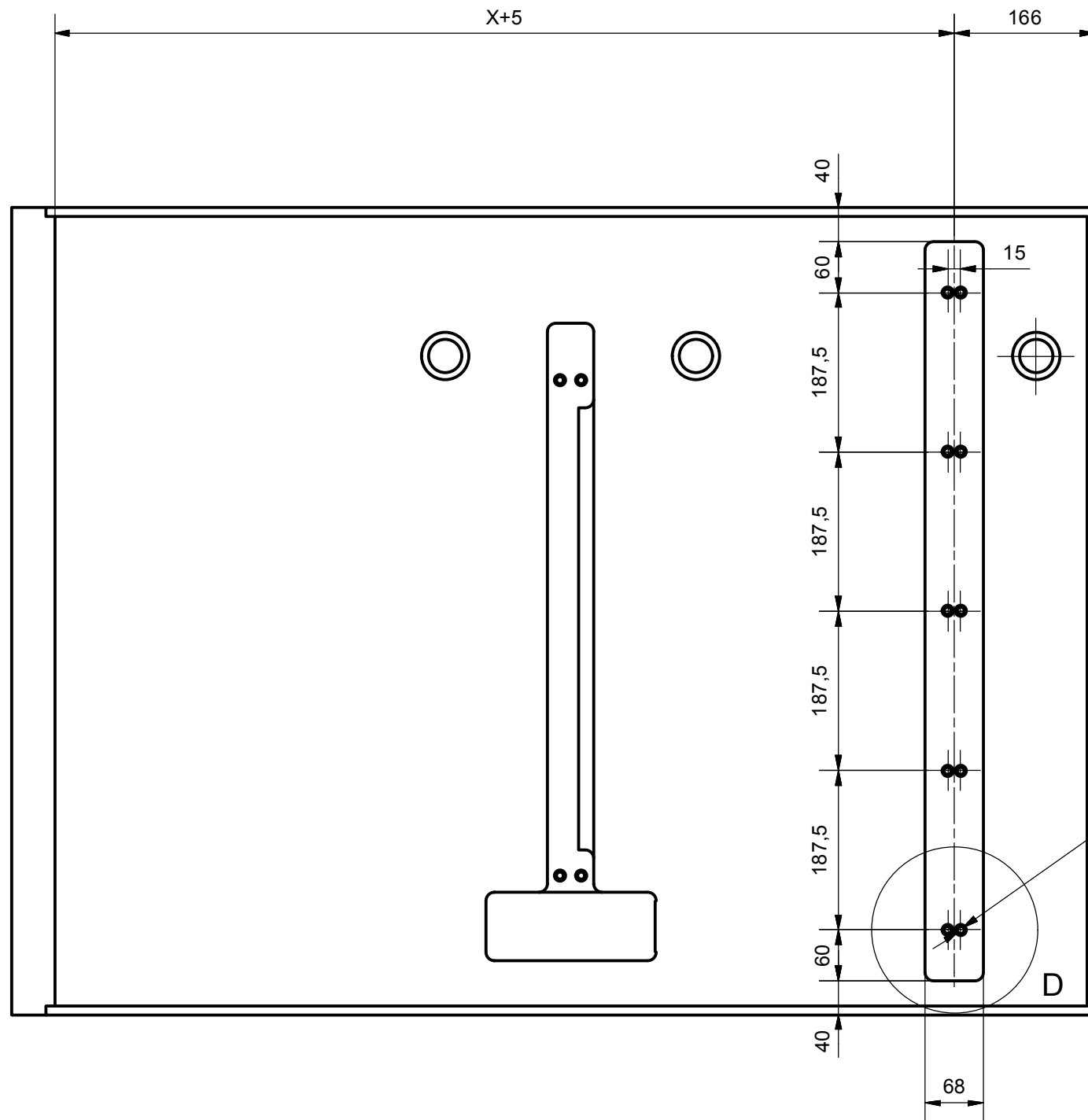


A

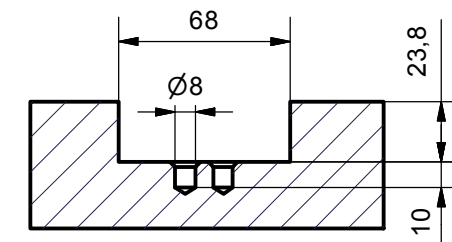


B

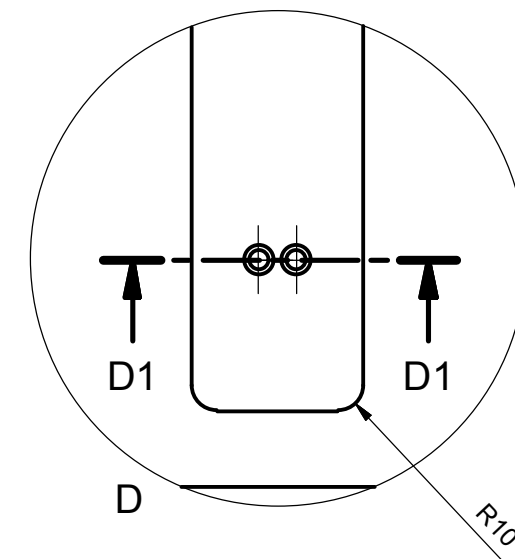
DIMENSIONI PIANO PLANE DIMENSIONS



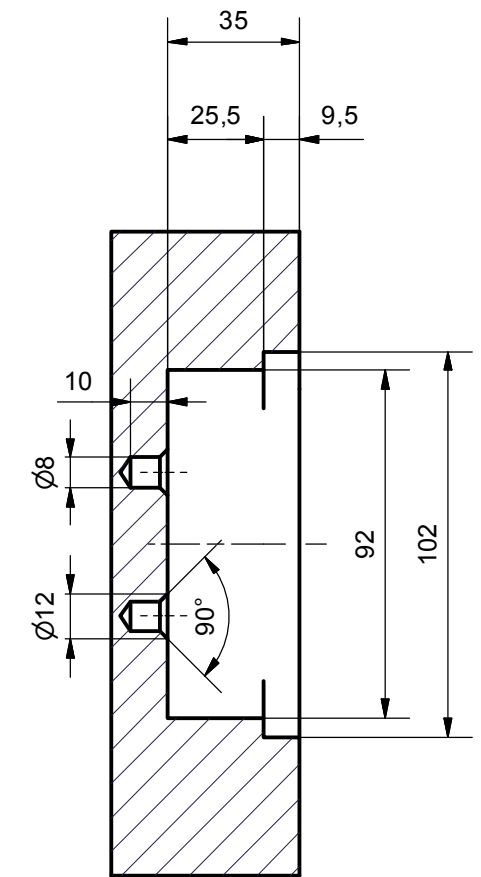
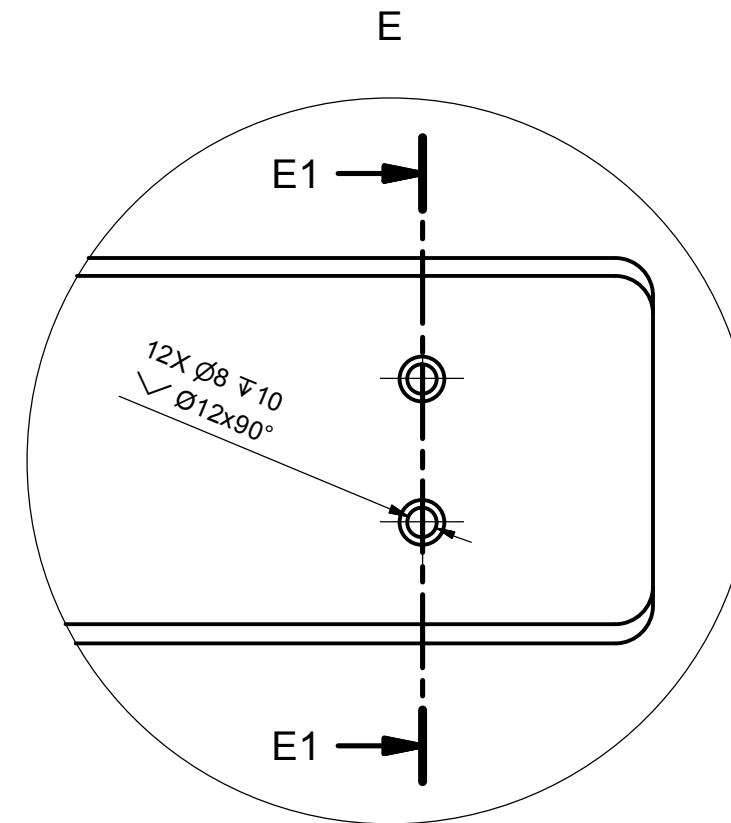
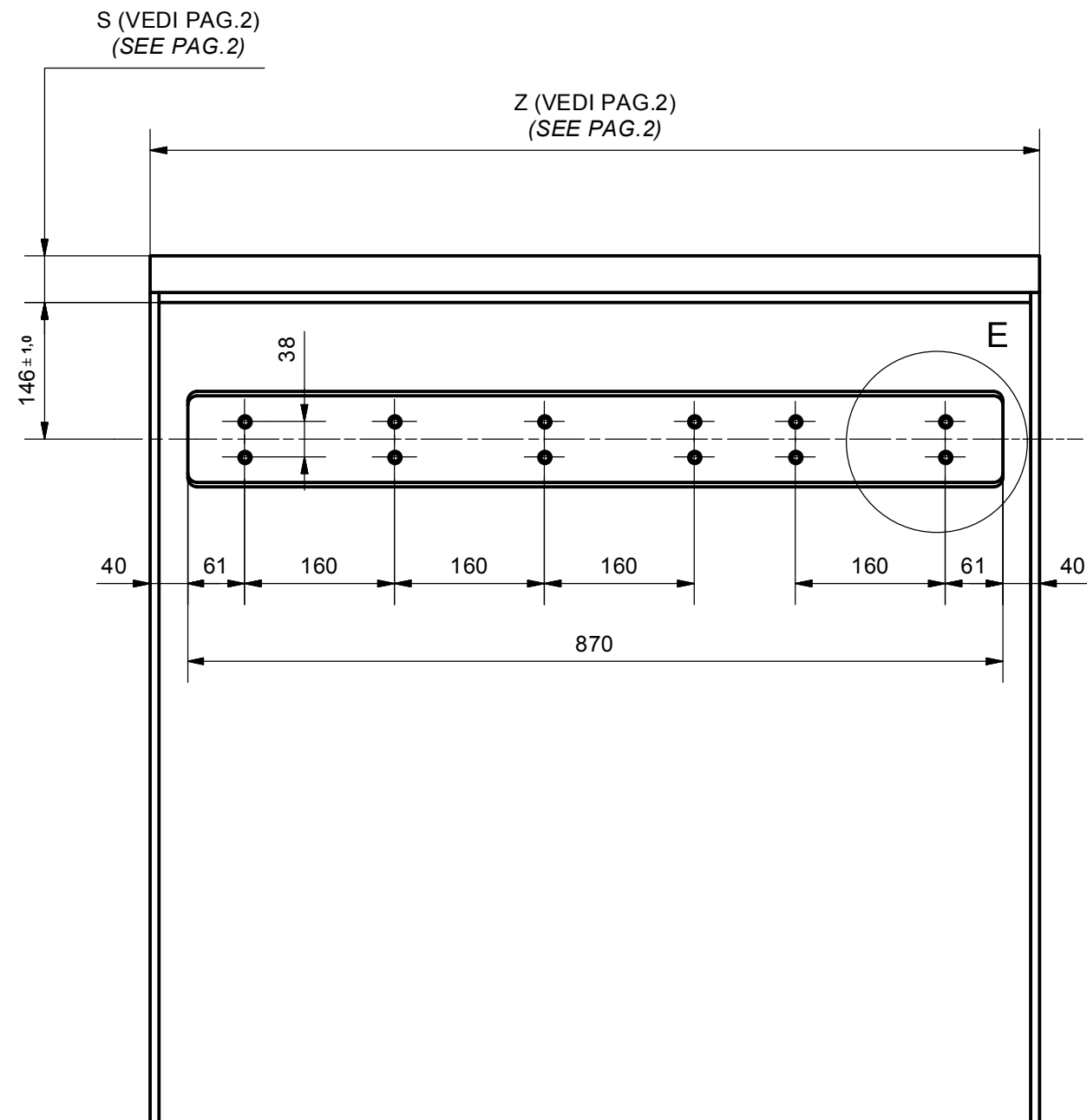
10X Ø8 ∇ 10
 ∇ Ø12x90°



D1-D1

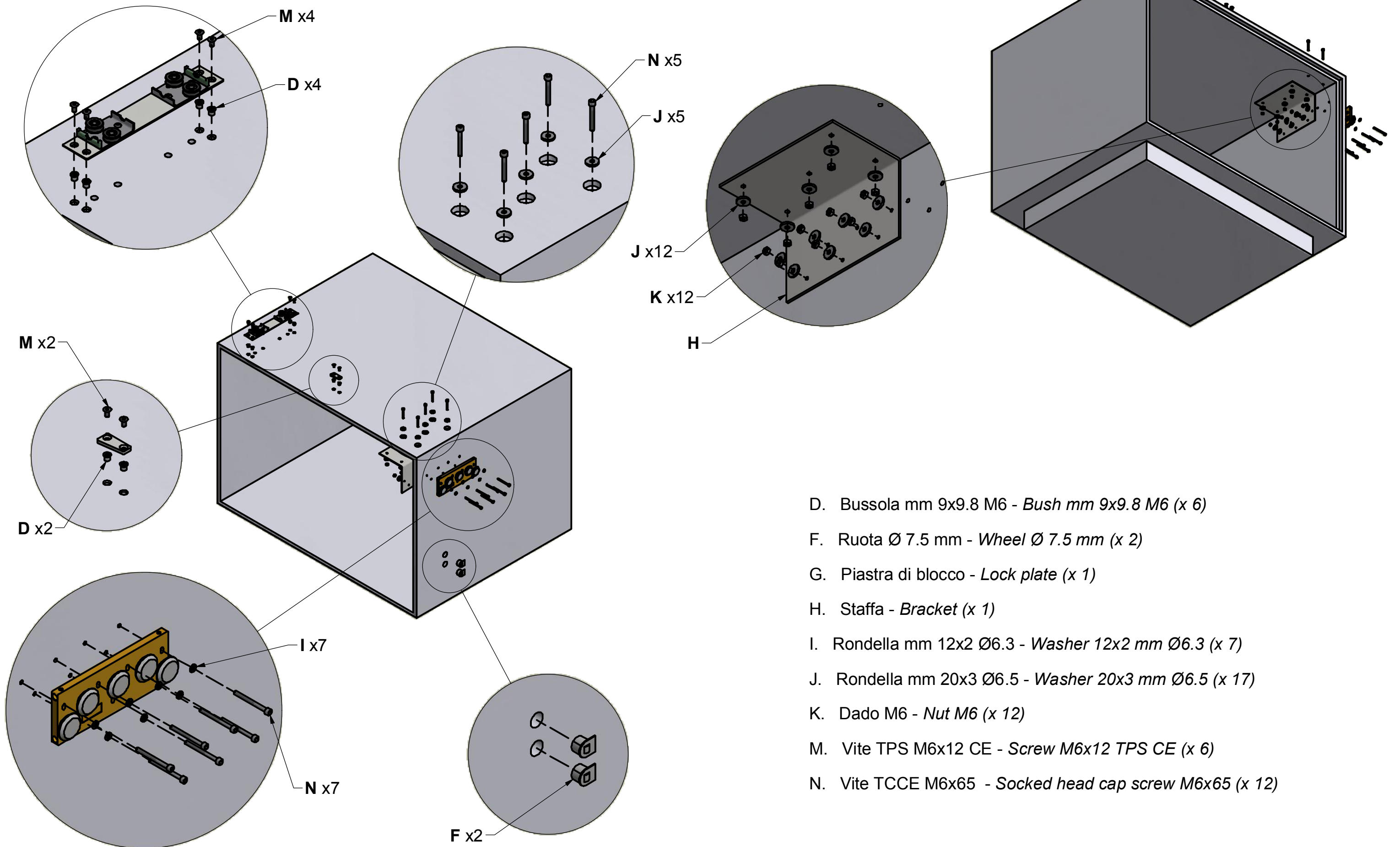


DIMENSIONI PIANO PLANE DIMENSIONS



MONTAGGIO DEL MECCANISMO SUL MOBILE

MOUNTING OF THE MECHANISM ON THE CABINET



D. Bussola mm 9x9.8 M6 - *Bush mm 9x9.8 M6 (x 6)*

F. Ruota Ø 7.5 mm - *Wheel Ø 7.5 mm (x 2)*

G. Piastra di blocco - *Lock plate (x 1)*

H. Staffa - *Bracket (x 1)*

I. Rondella mm 12x2 Ø6.3 - *Washer 12x2 mm Ø6.3 (x 7)*

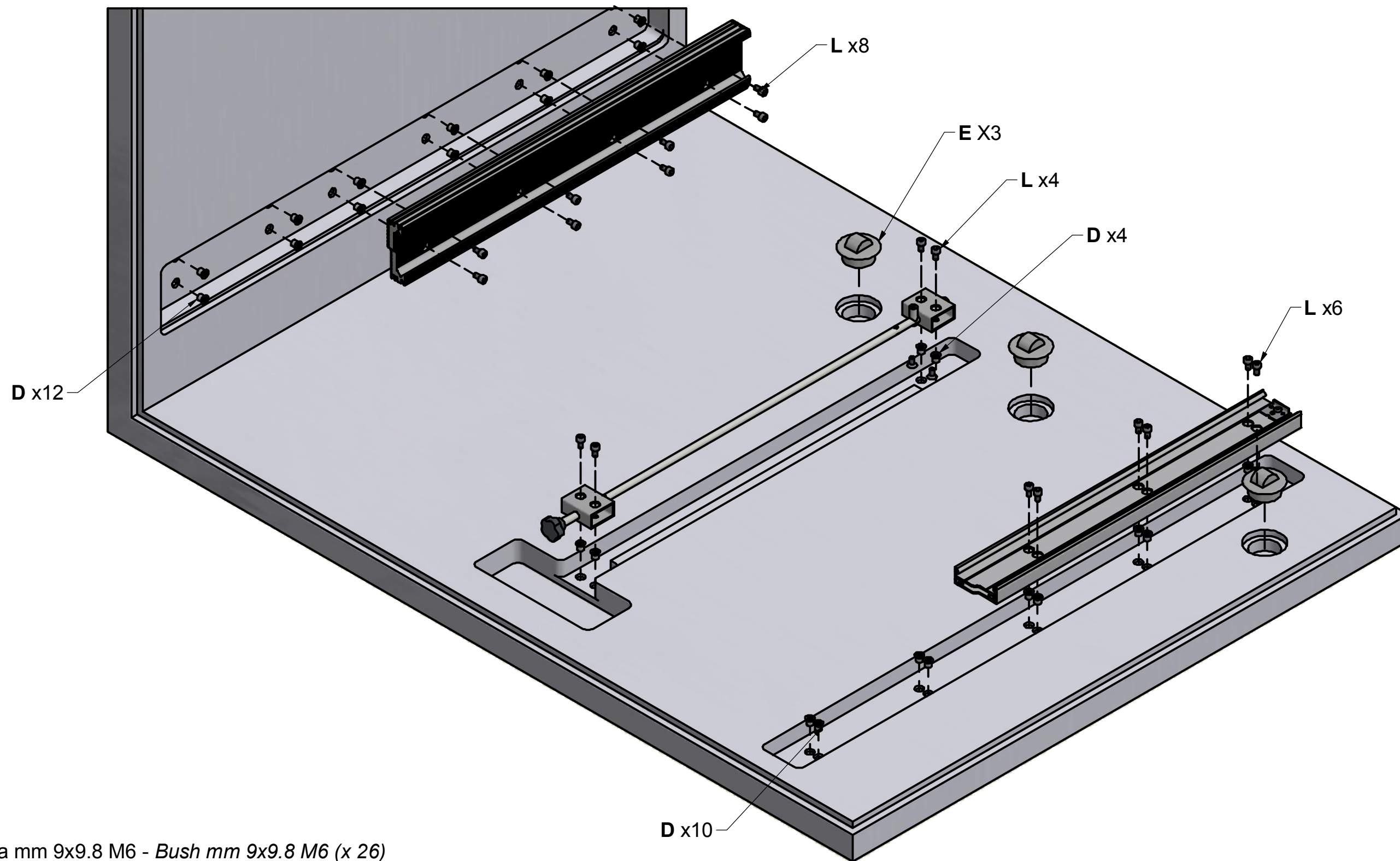
J. Rondella mm 20x3 Ø6.5 - *Washer 20x3 mm Ø6.5 (x 17)*

K. Dado M6 - *Nut M6 (x 12)*

M. Vite TPS M6x12 CE - *Screw M6x12 TPS CE (x 6)*

N. Vite TCCE M6x65 - *Socked head cap screw M6x65 (x 12)*

MONTAGGIO DEL MECCANISMO SUL MOBILE MOUNTING OF THE MECHANISM ON THE CABINET

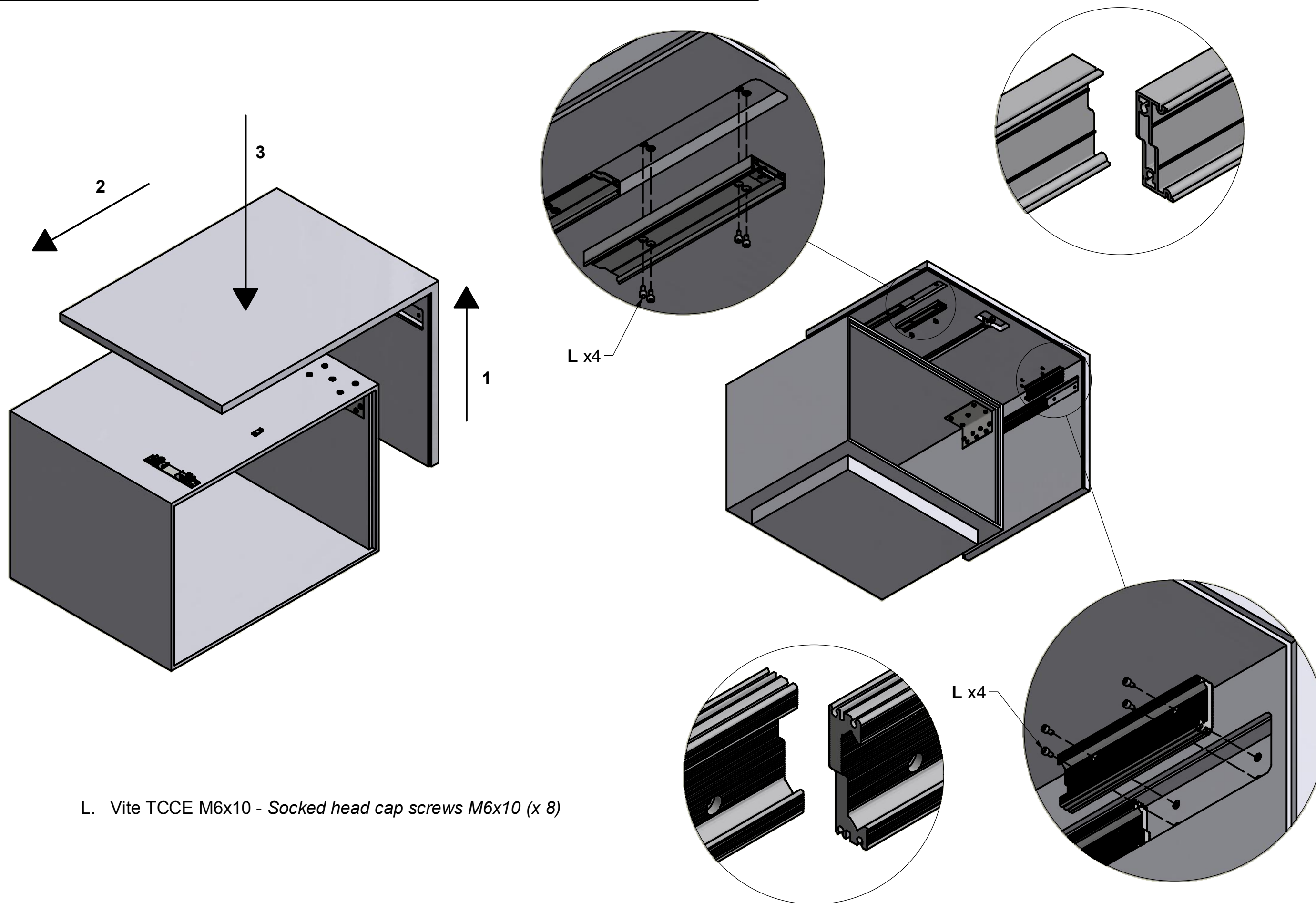


D. Bussola mm 9x9.8 M6 - Bush mm 9x9.8 M6 (x 26)

E. Ruota Ø13.5 mm - Wheel Ø13.5 mm (x 3)

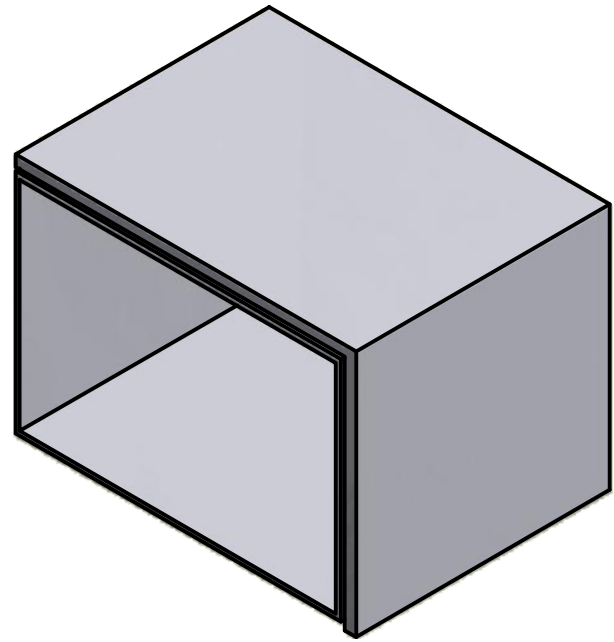
L. Vite TCCE M6x10 - Socked head cap screws M6x10 (x 18)

MONTAGGIO DEL MECCANISMO SUL MOBILE MOUNTING OF THE MECHANISM ON THE CABINET

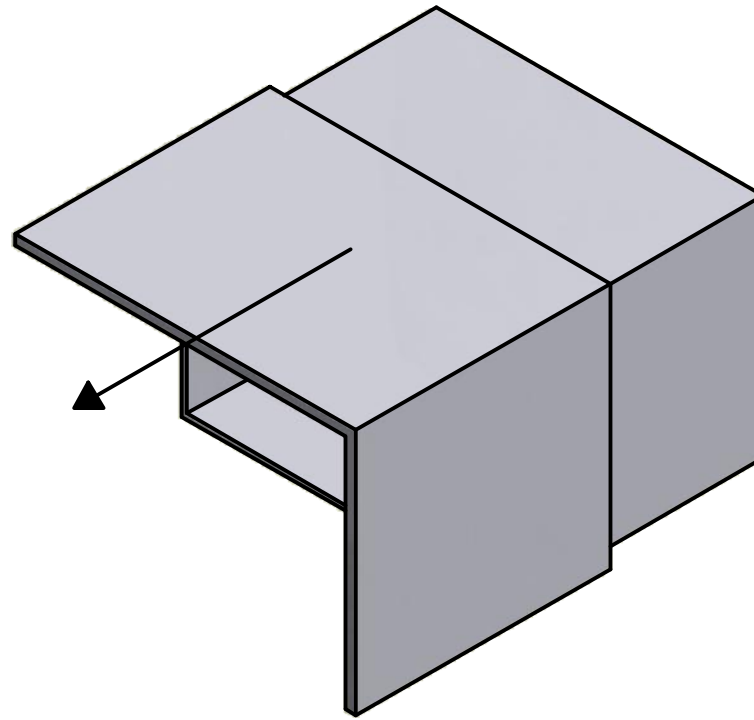


L. Vite TCCE M6x10 - Socked head cap screws M6x10 (x 8)

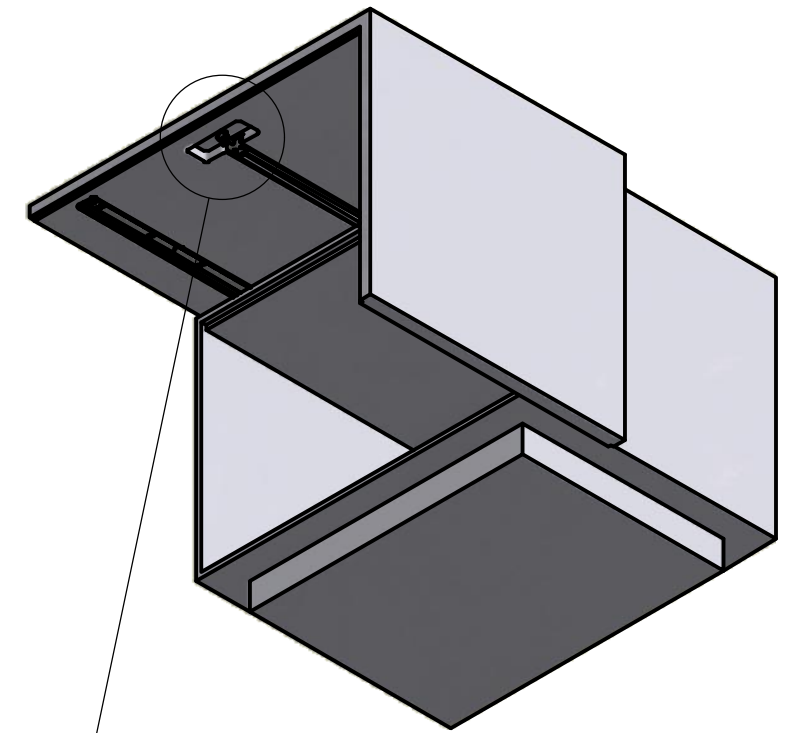
SEQUENZA DI FUNZIONAMENTO FUNCTIONING STEPS



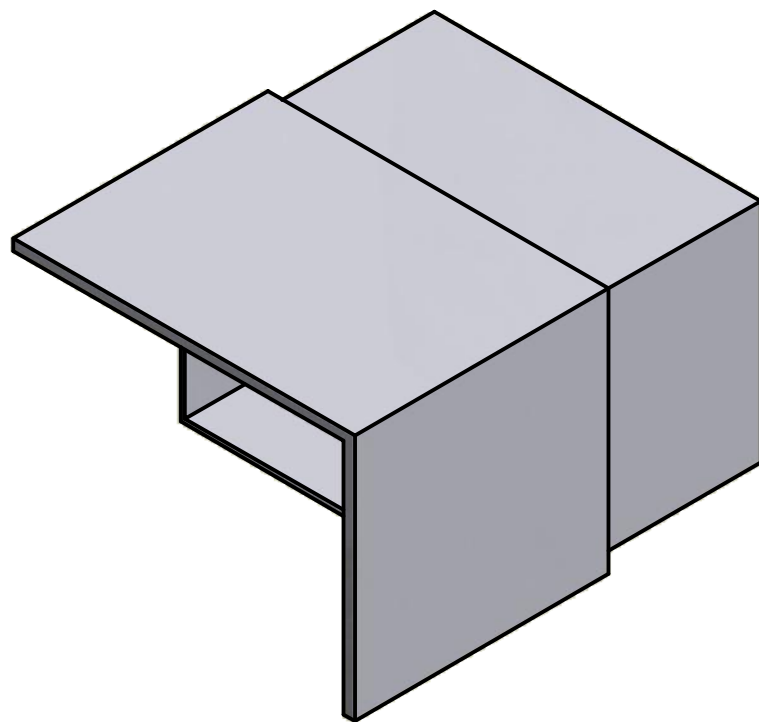
CHIUSO
CLOSED



APERTURA PIANO
PLANE OPENING



BLOCCO PIANO
PLANE LOCK



APERTO
OPENED

